

Recombinant Human interleukin 1 receptor-like 1 Protein, His&Fc tagged

Cat. No. IL1RL1-054H **Lot. No.** (See product label)

SPECIFICATION

Product Overview	Recombinant human IL1RL1/DER4/ST2 protein (Q01638) (Lys 19-Ser 328) with both hFc, his tag at the C-terminus was expressed HEK293.
Species	Human
Source	HEK293
ProteinLength	19-328aa
Description	Receptor for interleukin-33 (IL-33); signaling requires association of the coreceptor IL1RAP. Its stimulation recruits MYD88, IRAK1, IRAK4, and TRAF6, followed by phosphorylation of MAPK3/ERK1 and/or MAPK1/ERK2, MAPK14, and MAPK8. Possibly involved in helper T-cell function (Probable). Upon tissue injury, induces UCP2-dependent mitochondrial rewiring that attenuates the generation of reactive oxygen species and preserves the integrity of Krebs cycle required for persistent production of itaconate and subsequent GATA3-dependent differentiation of inflammation-resolving alternatively activated macrophages.
Tag	C-His&Fc
Molecular Mass	62.3 kDa
Endotoxin	Less than 1.0 EU/μg by the LAL method.

 Tel: 1-631-559-9269 1-516-512-3133

 Email: info@creative-biomart.com  Fax: 1-631-938-8127

 45-1 Ramsey Road, Shirley, NY 11967, USA

Purity	>90% as determined by SDS-PAGE.
Storage	Please avoid repeated freeze-thaw cycles. Samples are stable for up to twelve months from date of receipt at -20 to -80 centigrade. It is recommended that aliquot the reconstituted solution to minimize freeze-thaw cycles.
Storage Buffer	Lyophilized from a 0.2 µm filtered solution of PBS, pH7.4, 5% Trehalose, 5% mannitol.
Reconstitution	Reconstitute at 250 µg/mL in sterile water.

GENE INFORMATION

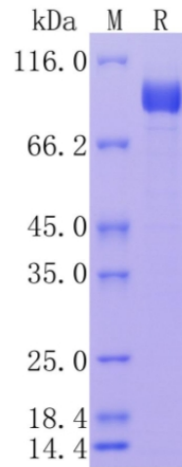
Gene Name	IL1RL1 interleukin 1 receptor-like 1 [Homo sapiens (human)]
Official Symbol	IL1RL1
Synonyms	IL1RL1; interleukin 1 receptor-like 1; interleukin-1 receptor-like 1; DER4; FIT 1; homolog of mouse growth stimulation expressed; IL33R; ST2; ST2L; ST2V; T1; growth stimulation-expressed; interleukin 1 receptor-related protein; homolog of mouse growth stimulation-expressed; FIT-1; MGC32623;
Gene ID	9173
mRNA Refseq	NM_003856
Protein Refseq	NP_003847
MIM	601203
UniProt ID	Q01638

 Tel: 1-631-559-9269 1-516-512-3133

 Email: info@creative-biomart.com  Fax: 1-631-938-8127

 45-1 Ramsey Road, Shirley, NY 11967, USA

**Protein on SDS-
PAGE under
reducing (R)
condition.**



 Tel: 1-631-559-9269 1-516-512-3133

 Email: info@creative-biomart.com  Fax: 1-631-938-8127

 45-1 Ramsey Road, Shirley, NY 11967, USA