

Active Recombinant Human IL1RL1 protein, His-tagged

Cat. No. IL1RL1-3991H Lot. No. (See product label)

SPECIFICATION

Product Overview	Active Recombinant Human IL1RL1 protein(Q01638-2)(Lys19-Phe328) is expressed from HEK293 with His tag at the C-Terminus.
Species	Human
Source	HEK293
ProteinLength	19-328 aa
Form	Lyophilized from 0.22µm filtered solution in PBS (pH 7.4).
Bio-activity	Immobilized Human IL-33, No Tag at 5µg/ml (100µl/well) on the plate. Dose response curve for Human IL-1RL1, His Tag with the EC50 of 7.4ng/ml determined by ELISA.
Molecular Mass	The protein has a predicted MW of 36 kDa. Due to glycosylation, the protein migrates to 50-70 kDa based on Bis-Tris PAGE result.
Endotoxin	Less than 1 EU per µg by the LAL method.
Purity	> 95% as determined by Bis-Tris PAGE > 95% as determined by HPLC
Storage	-20 to -80°C for 12 months as supplied from date of receipt. -80°C for 3 months after reconstitution. Recommend to aliquot the protein into smaller quantities for optimal storage. Please minimize freeze-thaw cycles.

 Tel: 1-631-559-9269 1-516-512-3133

 Email: info@creative-biomart.com  Fax: 1-631-938-8127

 45-1 Ramsey Road, Shirley, NY 11967, USA

Reconstitution Dissolve the lyophilized protein in distilled water.

GENE INFORMATION

Gene Name IL1RL1 interleukin 1 receptor-like 1 [Homo sapiens]

Official Symbol IL1RL1

Synonyms IL1RL1; interleukin 1 receptor-like 1; interleukin-1 receptor-like 1; DER4; FIT 1; homolog of mouse growth stimulation expressed; IL33R; ST2; ST2L; ST2V; T1; growth stimulation-expressed; interleukin 1 receptor-related protein; homolog of mouse growth stimulation-expressed; FIT-1; MGC32623;

Gene ID 9173

mRNA Refseq NM_003856

Protein Refseq NP_003847

MIM 601203

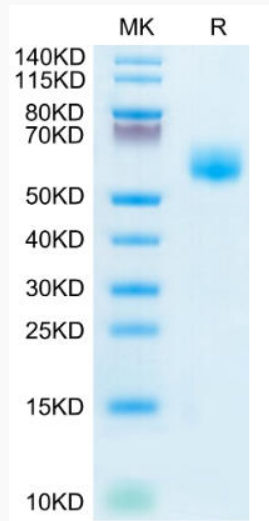
UniProt ID Q01638

 Tel: 1-631-559-9269 1-516-512-3133

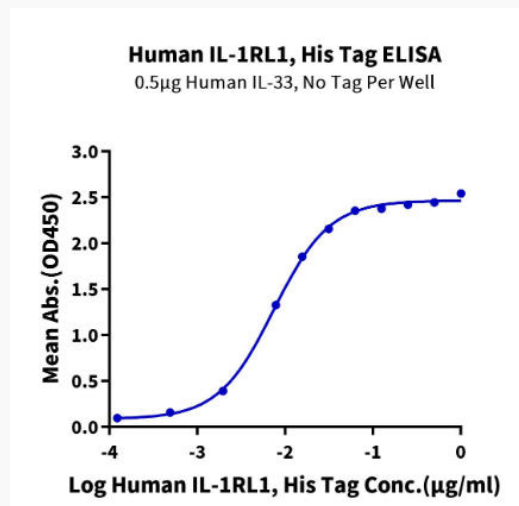
 Email: info@creative-biomart.com  Fax: 1-631-938-8127

 45-1 Ramsey Road, Shirley, NY 11967, USA

Bis-Tris PAGE



ELISA Data



 Tel: 1-631-559-9269 1-516-512-3133

 Email: info@creative-biomart.com  Fax: 1-631-938-8127

 45-1 Ramsey Road, Shirley, NY 11967, USA