

## Recombinant Human IL1RL1 Protein (Lys19-Pro323), C-His tagged

Cat. No. IL1RL1-5288H Lot. No. (See product label)

### SPECIFICATION

<b>Product Overview</b>	Recombinant human IL1RL1/ST2 (Lys19-Pro323) fused with the C-His tag was expressed in Mammalian cells.
<b>Species</b>	Human
<b>Source</b>	Mammalian Cells
<b>ProteinLength</b>	Lys19-Pro323
<b>Form</b>	Lyophilized
<b>Molecular Mass</b>	38.26 kDa
<b>Purity</b>	>90% as determined by SDS-PAGE.
<b>Notes</b>	For research use only.
<b>Storage</b>	Use a manual defrost freezer and avoid repeated freeze thaw cycles. Store at 2 to 8 centigrade for one week. Store at -20 to -80 centigrade for twelve months from the date of receipt.
<b>Storage Buffer</b>	Lyophilized from PBS, pH 7.4, 1mM EDTA, 4% trehalose, 1% mannitol.
<b>Reconstitution</b>	Reconstitute in sterile water for a stock solution.

 Tel: 1-631-559-9269 1-516-512-3133

 Email: [info@creative-biomart.com](mailto:info@creative-biomart.com)  Fax: 1-631-938-8127

 45-1 Ramsey Road, Shirley, NY 11967, USA

## GENE INFORMATION

**Gene Name** IL1RL1 interleukin 1 receptor-like 1 [ Homo sapiens (human) ]

**Official Symbol** IL1RL1

**Synonyms** IL1RL1; interleukin 1 receptor-like 1; interleukin-1 receptor-like 1; DER4; FIT 1; homolog of mouse growth stimulation expressed; IL33R; ST2; ST2L; ST2V; T1; growth stimulation-expressed; interleukin 1 receptor-related protein; homolog of mouse growth stimulation-expressed; FIT-1; MGC32623;

**Gene ID** 9173

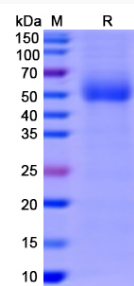
**mRNA Refseq** NM\_003856

**Protein Refseq** NP\_003847

**MIM** 601203

**UniProt ID** Q01638

### SDS-PAGE



Tel: 1-631-559-9269 1-516-512-3133

Email: [info@creative-biomart.com](mailto:info@creative-biomart.com) Fax: 1-631-938-8127

45-1 Ramsey Road, Shirley, NY 11967, USA