

Recombinant Human IL1RL1 protein, His-tagged

Cat. No. IL1RL1-536H Lot. No. (See product label)

SPECIFICATION

Product Overview	Recombinant Human IL1RL1 protein(Q01638-2)(Lys19-Phe328), fused with C-terminal His tag, was expressed in HEK293.
Species	Human
Source	HEK293
ProteinLength	Lys19-Phe328
Tag	C-His
Form	Supplied as 0.22µm filtered solution in PBS (pH 7.4).
Bio-activity	Immobilized Human IL-33, No Tag at 5µg/ml (100µl/well) on the plate. Dose response curve for Human IL-1RL1, His Tag with the EC50 of 9.6ng/ml determined by ELISA.
Molecular Mass	The protein has a predicted MW of 36 kDa. Due to glycosylation, the protein migrates to 50-70 kDa based on Tris-Bis PAGE result.
Endotoxin	Less than 1EU per µg by the LAL method.
Purity	> 95% as determined by Tris-Bis PAGE; > 95% as determined by HPLC
Storage	Valid for 12 months from date of receipt when stored at -80°C; Recommend to aliquot the protein into smaller quantities for optimal storage. Please do not repeated freeze-

 Tel: 1-631-559-9269 1-516-512-3133

 Email: info@creative-biomart.com  Fax: 1-631-938-8127

 45-1 Ramsey Road, Shirley, NY 11967, USA

thaw cycles.

Reconstitution

It is recommended that sterile water be added to the vial to prepare a stock solution of 0.2 ug/ul. Centrifuge the vial at 4°C before opening to recover the entire contents.

GENE INFORMATION

Gene Name [IL1RL1 interleukin 1 receptor-like 1 \[Homo sapiens \]](#)

Official Symbol [IL1RL1](#)

Synonyms

IL1RL1; interleukin 1 receptor-like 1; interleukin-1 receptor-like 1; DER4; FIT 1; homolog of mouse growth stimulation expressed; IL33R; ST2; ST2L; ST2V; T1; growth stimulation-expressed; interleukin 1 receptor-related protein; homolog of mouse growth stimulation-expressed; FIT-1; MGC32623;

Gene ID [9173](#)

mRNA Refseq [NM_003856](#)

Protein Refseq [NP_003847](#)

MIM [601203](#)

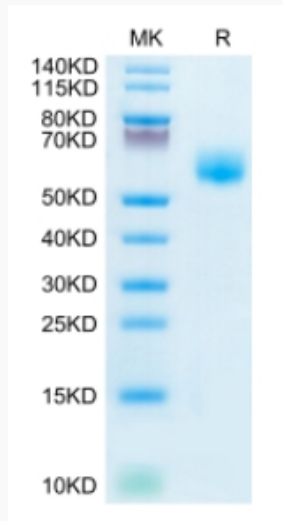
UniProt ID [Q01638](#)

 Tel: 1-631-559-9269 1-516-512-3133

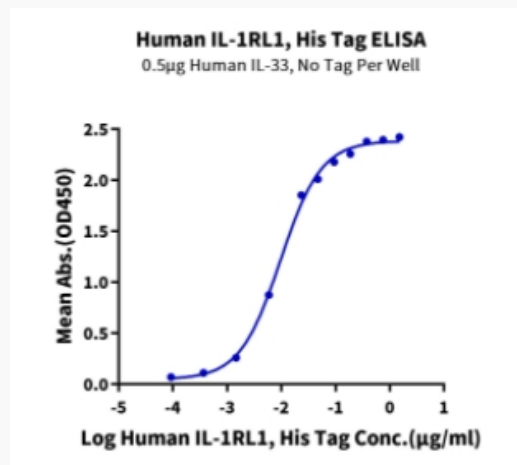
 Email: info@creative-biomart.com  Fax: 1-631-938-8127

 45-1 Ramsey Road, Shirley, NY 11967, USA

Tris-Bis PAGE



ELISA Data



 Tel: 1-631-559-9269 1-516-512-3133

 Email: info@creative-biomart.com  Fax: 1-631-938-8127

 45-1 Ramsey Road, Shirley, NY 11967, USA