

Recombinant Mouse IL1RL1 Protein (Lys19-Phe328), C-His tagged

Cat. No. IL1RL1-6811M Lot. No. (See product label)

SPECIFICATION

Product Overview	Recombinant mouse IL1RL1 (Lys19-Phe328) fused with the C-terminal His tag was expressed in mammalian cells.
Species	Mouse
Source	Mammalian Cells
ProteinLength	Lys19-Phe328
Description	<p>The protein encoded by this gene is a member of the interleukin 1 receptor family. Studies of the similar gene in mouse suggested that this receptor can be induced by proinflammatory stimuli, and may be involved in the function of helper T cells. This gene, interleukin 1 receptor, type I (IL1R1), interleukin 1 receptor, type II (IL1R2) and interleukin 1 receptor-like 2 (IL1RL2) form a cytokine receptor gene cluster in a region mapped to chromosome 2q12. Alternative splicing of this gene results in multiple transcript variants.</p>
Form	Lyophilized powder/frozen liquid
Molecular Mass	34.1 kDa
Purity	> 90 % as determined by SDS-PAGE
Notes	For research use only.

 Tel: 1-631-559-9269 1-516-512-3133

 Email: info@creative-biomart.com  Fax: 1-631-938-8127

 45-1 Ramsey Road, Shirley, NY 11967, USA

Storage	Use a manual defrost freezer and avoid repeated freeze thaw cycles. Store at 2 to 8 centigrade for one week. Store at -20 to -80 centigrade for twelve months from the date of receipt.
Storage Buffer	Supplied as solution form in PBS or lyophilized from PBS.
Reconstitution	Reconstitute in sterile water for a stock solution.
Shipping	They are shipped out with dry ice/blue ice unless customers require otherwise.

GENE INFORMATION

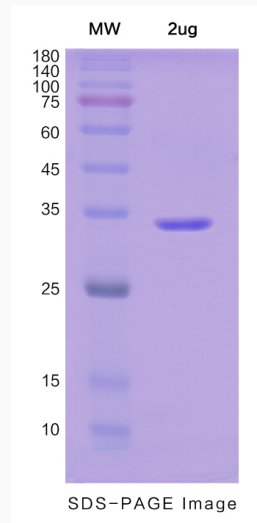
Gene Name	IL1RL1 interleukin 1 receptor like 1 [Homo sapiens (human)]
Official Symbol	IL1RL1
Synonyms	IL1RL1; interleukin 1 receptor like 1; T1; ST2; DER4; ST2L; ST2V; FIT-1; IL33R; interleukin-1 receptor-like 1; growth stimulation-expressed; homolog of mouse growth stimulation-expressed; interleukin 1 receptor-related protein; EC 3.2.2.6
Gene ID	9173
mRNA Refseq	NM_001282408
Protein Refseq	NP_001269337
MIM	601203
UniProt ID	Q01638

 Tel: 1-631-559-9269 1-516-512-3133

 Email: info@creative-biomart.com  Fax: 1-631-938-8127

 45-1 Ramsey Road, Shirley, NY 11967, USA

SDS-PAGE



 Tel: 1-631-559-9269 1-516-512-3133

 Email: info@creative-biomart.com  Fax: 1-631-938-8127

 45-1 Ramsey Road, Shirley, NY 11967, USA