

## Recombinant Human IL1RL2 protein, His-tagged

Cat. No. IL1RL2-1009H Lot. No. (See product label)

### SPECIFICATION

<b>Product Overview</b>	Recombinant Human IL1RL2 protein(Asp20-Tyr337 (C154S,C262S))(Q9HB29-1) is expressed from HEK293 with His tag at the C-Terminus.
<b>Species</b>	Human
<b>Source</b>	HEK293
<b>ProteinLength</b>	20-335 a.a.
<b>Form</b>	Lyophilized from 0.22um filtered solution in PBS (pH 7.4). Normally 8% trehalose is added as protectant before lyophilization.
<b>Bio-activity</b>	Immobilized Human IL-1 Rrp2 (C154S,C262S) , His Tag at 0.5ug/ml (100ul/Well) on the plate. Dose response curve for Anti-IL-1 Rrp-2 Antibody, hFc Tag with the EC50 of 15.1ng/ml determined by ELISA.
<b>Molecular Mass</b>	The protein has a predicted MW of 37.2 kDa. Due to glycosylation, the protein migrates to 56-67 kDa based on Tris-Bis PAGE result.
<b>Endotoxin</b>	Less than 1EU per ug by the LAL method.
<b>Purity</b>	> 95% as determined by Tris-Bis PAGE > 95% as determined by HPLC
<b>Storage</b>	-20 to -80°C for 12 months as supplied from date of receipt.

 Tel: 1-631-559-9269 1-516-512-3133

 Email: [info@creative-biomart.com](mailto:info@creative-biomart.com)  Fax: 1-631-938-8127

 45-1 Ramsey Road, Shirley, NY 11967, USA

-80°C for 3-6 months after reconstitution.  
 2-8°C for 2-7 days after reconstitution.  
 Recommend to aliquot the protein into smaller quantities for optimal storage. Please minimize freeze-thaw cycles.

**Reconstitution**

Centrifuge the tube before opening. Reconstituting to a concentration more than 100 ug/ml is recommended. Dissolve the lyophilized protein in distilled water.

## GENE INFORMATION

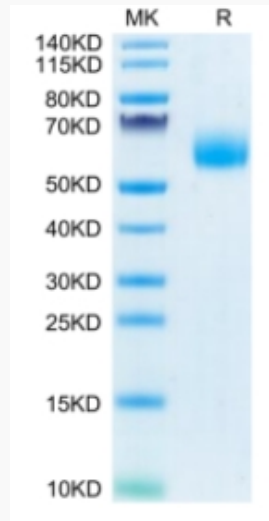
<b>Gene Name</b>	IL1RL2 interleukin 1 receptor-like 2 [ Homo sapiens ]
<b>Official Symbol</b>	IL1RL2
<b>Synonyms</b>	IL1RL2; interleukin 1 receptor-like 2; interleukin-1 receptor-like 2; IL1R rp2; IL1RRP2; IL-1Rrp2; interleukin-1 receptor-related protein 2; IL1R-rp2;
<b>Gene ID</b>	8808
<b>mRNA Refseq</b>	NM_003854
<b>Protein Refseq</b>	NP_003845
<b>MIM</b>	604512
<b>UniProt ID</b>	Q9HB29

 Tel: 1-631-559-9269 1-516-512-3133

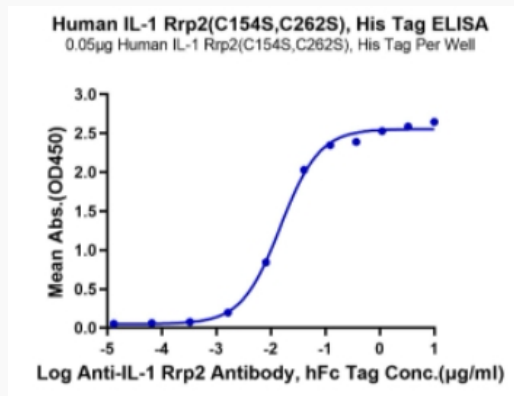
 Email: [info@creative-biomart.com](mailto:info@creative-biomart.com)  Fax: 1-631-938-8127

 45-1 Ramsey Road, Shirley, NY 11967, USA

**Tris-Bis PAGE**



**ELISA Data**



 Tel: 1-631-559-9269 1-516-512-3133

 Email: [info@creative-biomart.com](mailto:info@creative-biomart.com)  Fax: 1-631-938-8127

 45-1 Ramsey Road, Shirley, NY 11967, USA