

## Recombinant Human IL1RL2 protein, Fc-tagged

Cat. No. IL1RL2-318H Lot. No. (See product label)

### SPECIFICATION

<b>Product Overview</b>	Recombinant Human IL1RL2 protein (Asp20-Arg335), fused to human IgG1 Fc tag at C-terminus, was expressed in human 293 cells (HEK293).
<b>Species</b>	Human
<b>Source</b>	HEK293
<b>ProteinLength</b>	316
<b>Description</b>	The Interleukin 1 receptor family (IL-1 R) comprises at least eleven members including IL-1 RI (IL-1 R1), IL-1 RII (IL-1 R2), IL-1 RAcP (IL-1 R3), ST2 (T1/IL-1 R4), IL-18 Ra (IL-1 Rrp/IL-1 R5), IL-1 Rrp2 (IL-1 RL2/IL-1 R6), IL-18 Rb (AcPL/IL-1 R7), IL-1RAPL-1 (TIGIRR-2/IL-1 R8), and TIGIRR-1 (IL-1 R9). All family members possess three immunoglobulin (Ig)-like domains in their extracellular region. Most members also have an intracellular TIR (Toll-like receptor/IL-1 receptor signaling) domain that is also conserved in the Toll-like receptor family. Related proteins, SIGIRR (single Ig domain-containing IL-1 R-related molecule) and IL-18BP, differ from the other members by having only one Ig domain.
<b>Form</b>	Lyophilized from 0.22 um filtered solution in Tris with Glycine, Arginine and NaCl, pH7.5, 10% trehalose.
<b>Molecular Mass</b>	The protein has a calculated MW of 62.4 kDa. The protein migrates as 70-90 kDa under reducing (R) condition (SDS-PAGE) due to glycosylation.

 Tel: 1-631-559-9269 1-516-512-3133

 Email: [info@creative-biomart.com](mailto:info@creative-biomart.com)  Fax: 1-631-938-8127

 45-1 Ramsey Road, Shirley, NY 11967, USA

<b>Endotoxin</b>	Less than 1.0 EU per ug by the LAL method.
<b>Purity</b>	>95% as determined by SDS-PAGE.
<b>Storage</b>	<p>For long term storage, the product should be stored at lyophilized state at -20 centigrade or lower.</p> <p>Please avoid repeated freeze-thaw cycles.</p> <p>This product is stable after storage at:</p> <p>-20 centigrade to -70 centigrade for 12 months in lyophilized state;          -70 centigrade for 3 months under sterile conditions after reconstitution.</p>
<b>Reconstitution</b>	It is recommended that sterile water be added to the vial to prepare a stock solution of 0.2 ug/ul. Centrifuge the vial at 4°C before opening to recover the entire contents.

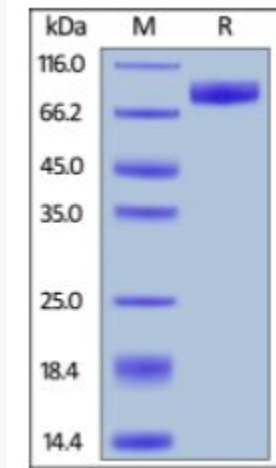
## GENE INFORMATION

<b>Gene Name</b>	IL1RL2
<b>Official Symbol</b>	IL1RL2
<b>Synonyms</b>	IL1RL2; interleukin 1 receptor-like 2; interleukin-1 receptor-like 2; IL1R rp2; IL1RRP2; IL-1Rrp2; interleukin-1 receptor-related protein 2; IL1R-rp2
<b>Gene ID</b>	8808
<b>mRNA Refseq</b>	NM_003854
<b>Protein Refseq</b>	NP_003845
<b>MIM</b>	604512

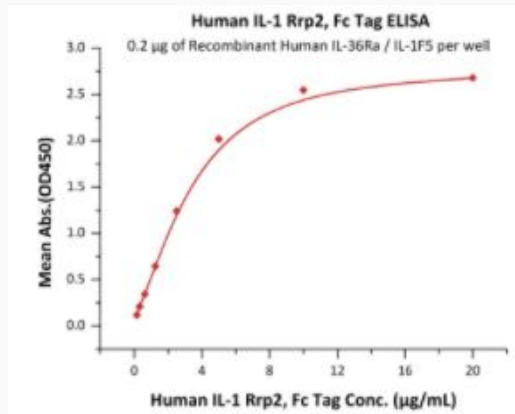
 Tel: 1-631-559-9269 1-516-512-3133

 Email: [info@creative-biomart.com](mailto:info@creative-biomart.com)  Fax: 1-631-938-8127

 45-1 Ramsey Road, Shirley, NY 11967, USA

**UniProt ID**
**Q9HB29**
**SDS-PAGE of  
IL1RL2-318H**


Human IL-1 Rrp2, Fc Tag on SDS-PAGE under reducing (R) condition. The gel was stained overnight with Coomassie Blue. The purity of the protein is greater than 95%.

**Bioactivity-ELISA of  
IL1RL2-318H**


Immobilized Recombinant Human IL-36Ra /IL-1F5 at 2 µg/mL (100 µL/well) can bind Human IL-1 Rrp2, Fc Tag with a linear range of 0.156-5

 Tel: 1-631-559-9269 1-516-512-3133

 Email: [info@creative-biomart.com](mailto:info@creative-biomart.com)  Fax: 1-631-938-8127

 45-1 Ramsey Road, Shirley, NY 11967, USA



µg/mL (QC tested).

 Tel: 1-631-559-9269 1-516-512-3133

 Email: [info@creative-biomart.com](mailto:info@creative-biomart.com)  Fax: 1-631-938-8127

 45-1 Ramsey Road, Shirley, NY 11967, USA