

Recombinant Human IL1RL2 protein, hFc-tagged

Cat. No. IL1RL2-319H Lot. No. (See product label)

SPECIFICATION

Product Overview	Recombinant Human IL1RL2 protein(Q9HB29-1)(Asp20-Arg335), fused with C-terminal hFc tag, was expressed in HEK293.
Species	Human
Source	HEK293
ProteinLength	Asp20-Arg335
Tag	C-hFc
Form	Supplied as 0.22µm filtered solution in PBS (pH 7.4).
Bio-activity	Immobilized Human IL-1 Rrp-2, hFc Tag at 1ug/ml (100ul/well) on the plate. Dose response curve for Biotinylated Anti-IL-1 Rrp-2 Antibody, hFc Tag with the EC50 of 20.9ng/ml determined by ELISA (QC Test).
Molecular Mass	The protein has a predicted MW of 62.6 kDa. Due to glycosylation, the protein migrates to 75-110 kDa based on Tris-Bis PAGE result.
Endotoxin	Less than 1EU per µg by the LAL method.
Purity	> 95% as determined by Tris-Bis PAGE;> 95% as determined by HPLC
Storage	Valid for 12 months from date of receipt when stored at -80°C. Recommend to aliquot

 Tel: 1-631-559-9269 1-516-512-3133

 Email: info@creative-biomart.com  Fax: 1-631-938-8127

 45-1 Ramsey Road, Shirley, NY 11967, USA

the protein into smaller quantities for optimal storage. Please do not repeated freeze-thaw cycles.

Reconstitution

It is recommended that sterile water be added to the vial to prepare a stock solution of 0.2 ug/ul. Centrifuge the vial at 4°C before opening to recover the entire contents.

GENE INFORMATION

Gene Name IL1RL2 interleukin 1 receptor-like 2 [Homo sapiens]

Official Symbol IL1RL2

Synonyms IL1RL2; interleukin 1 receptor-like 2; interleukin-1 receptor-like 2; IL1R rp2; IL1RRP2; IL-1Rrp2; interleukin-1 receptor-related protein 2; IL1R-rp2;

Gene ID 8808

mRNA Refseq NM_003854

Protein Refseq NP_003845

MIM 604512

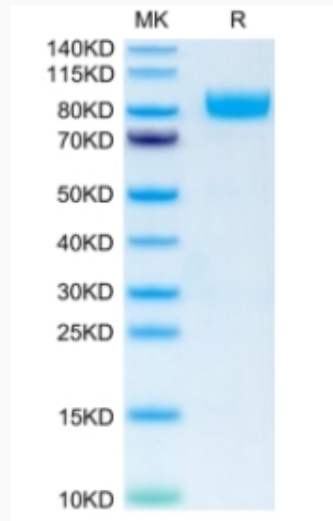
UniProt ID Q9HB29

 Tel: 1-631-559-9269 1-516-512-3133

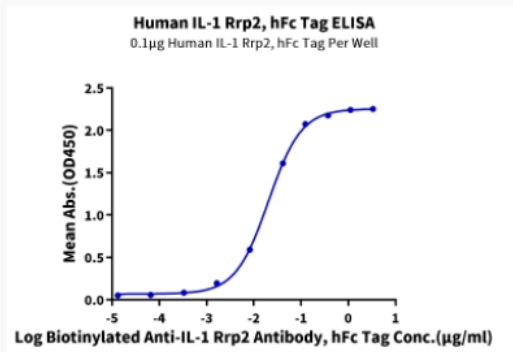
 Email: info@creative-biomart.com  Fax: 1-631-938-8127

 45-1 Ramsey Road, Shirley, NY 11967, USA

Tris-Bis PAGE



ELISA Data



 Tel: 1-631-559-9269 1-516-512-3133

 Email: info@creative-biomart.com  Fax: 1-631-938-8127

 45-1 Ramsey Road, Shirley, NY 11967, USA