

Recombinant Human IL1RL2 protein, His-Avi-tagged

Cat. No. IL1RL2-929H Lot. No. (See product label)

SPECIFICATION

Product Overview	Recombinant Human IL1RL2 protein(Q9HB29-1)(Asp20-Arg335), fused with C-terminal His and Avi tag, was expressed in HEK293.
Species	Human
Source	HEK293
ProteinLength	Asp20-Arg335
Tag	C-His-Avi
Form	Lyophilized from 0.22µm filtered solution in PBS (pH 7.4). Normally 5% trehalose is added as protectant before lyophilization.
Bio-activity	Immobilized Human IL-1 Rrp2, His Tag at 0.5µg/ml (100µl/Well). Dose response curve for Anti-IL-1Rrp2 Antibody, hFc Tag with the EC50 of 15.2ng/ml determined by ELISA.
Molecular Mass	The protein has a predicted MW of 39.1 kDa. Due to glycosylation, the protein migrates to 60-70 kDa based on Tris-Bis PAGE result.
Endotoxin	Less than 1EU per µg by the LAL method.
Purity	> 95% as determined by Tris-Bis PAGE; > 95% as determined by HPLC

 Tel: 1-631-559-9269 1-516-512-3133

 Email: info@creative-biomart.com  Fax: 1-631-938-8127

 45-1 Ramsey Road, Shirley, NY 11967, USA

Storage Reconstituted protein stable at -80°C for 12 months, 4°C for 1 week. Use a manual defrost freezer and avoid repeated freeze-thaw cycles.

Reconstitution Centrifuge tubes before opening. Reconstituting to a concentration more than 100 µg/ml is recommended. Dissolve the lyophilized protein in distilled water.

GENE INFORMATION

Gene Name [IL1RL2 interleukin 1 receptor-like 2 \[Homo sapiens \]](#)

Official Symbol [IL1RL2](#)

Synonyms IL1RL2; interleukin 1 receptor-like 2; interleukin-1 receptor-like 2; IL1R rp2; IL1RRP2; IL-1Rrp2; interleukin-1 receptor-related protein 2; IL1R-rp2;

Gene ID [8808](#)

mRNA Refseq [NM_003854](#)

Protein Refseq [NP_003845](#)

MIM [604512](#)

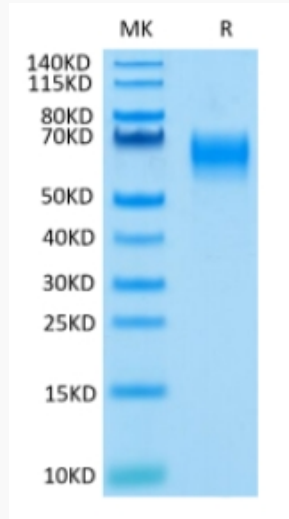
UniProt ID [Q9HB29](#)

 Tel: 1-631-559-9269 1-516-512-3133

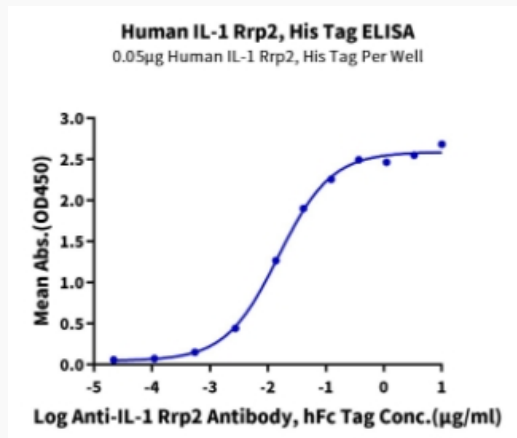
 Email: info@creative-biomart.com  Fax: 1-631-938-8127

 45-1 Ramsey Road, Shirley, NY 11967, USA

Tris-Bis PAGE



ELISA Data



 Tel: 1-631-559-9269 1-516-512-3133

 Email: info@creative-biomart.com  Fax: 1-631-938-8127

 45-1 Ramsey Road, Shirley, NY 11967, USA