

## Active Recombinant Mouse IL1b Protein, His-Tagged

Cat. No. IL1b-01M Lot. No. (See product label)

### SPECIFICATION

<b>Product Overview</b>	Recombinant human IL1b protein, His-tagged was expressed in E. coli cell
<b>Species</b>	Mouse
<b>Source</b>	E.coli
<b>Description</b>	Interleukin 1 beta (IL-1 $\beta$ ) also known as leukocytic pyrogen, leukocytic endogenous mediator, mononuclear cell factor, lymphocyte activating factor and other names, is a cytokine protein that in humans is encoded by the IL1B gene. There are two genes for interleukin-1 (IL-1): IL-1 alpha and IL-1 beta (this gene). IL-1 $\beta$ precursor is cleaved by cytosolic caspase 1 (interleukin 1 beta convertase) to form mature IL-1 $\beta$ .
<b>Form</b>	Lyophilized powder
<b>AA Sequence</b>	MVPIRQLHYRLRDEQQKSLVLSDPYELKALHLNGQNINQQVIFSMSFVQGEPNSDKI PVALGLKGKNLYLSCVMKDGTPTLQLESVDPKQYP KKKMEKRFVFNKIEVKSKVEFESAEPNWWYISTSQAEHKPVFLGNNSGQDIIDFTME SVSS with polyhistidine tag at the C-terminus
<b>Endotoxin</b>	<0.1 EU per 1 $\mu$ g of the protein by the LAL method.
<b>Bio-activity</b>	Measure by its ability to induce D10.G4.1 cells proliferation. The ED50 for this effect is <8 pg/mL. The specific activity of recombinant mouse IL-1 beta is approximately >1.2x 10 <sup>8</sup> IU/mg.

 Tel: 1-631-559-9269 1-516-512-3133

 Email: [info@creative-biomart.com](mailto:info@creative-biomart.com)  Fax: 1-631-938-8127

 45-1 Ramsey Road, Shirley, NY 11967, USA

<b>Purity</b>	>98% as determined by SDS-PAGE. Ni-NTA chromatography
<b>Storage Buffer</b>	The protein was lyophilized from a solution containing 1X PBS, pH 7.4.
<b>Reconstitution</b>	It is recommended to reconstitute the lyophilized protein in sterile H <sub>2</sub> O to a concentration not less than 100 µg/mL and incubate the stock solution for at least 20 min to ensure sufficient re-dissolved.
<b>Storage</b>	Lyophilized protein should be stored at -20°C. Upon reconstitution, protein aliquots should be stored at -20°C or -80°C.
<b>Notes</b>	Please use within one month after protein reconstitution.

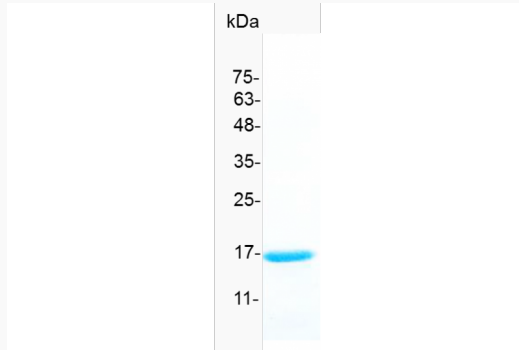
## GENE INFORMATION

<b>Gene Name</b>	Il1b interleukin 1 beta [ <i>Mus musculus</i> (house mouse) ]
<b>Official Symbol</b>	Il1b
<b>Synonyms</b>	Il-1b; IL-1beta
<b>Gene ID</b>	16176
<b>mRNA Refseq</b>	NM_008361.4
<b>Protein Refseq</b>	NP_032387.1
<b>UniProt ID</b>	P10749

 Tel: 1-631-559-9269 1-516-512-3133

 Email: [info@creative-biomart.com](mailto:info@creative-biomart.com)  Fax: 1-631-938-8127

 45-1 Ramsey Road, Shirley, NY 11967, USA



Tel: 1-631-559-9269 1-516-512-3133

Email: [info@creative-biomart.com](mailto:info@creative-biomart.com) Fax: 1-631-938-8127

45-1 Ramsey Road, Shirley, NY 11967, USA