

## Active Recombinant Horse IL1b protein, His-tagged

Cat. No. IL1b-5641H Lot. No. (See product label)

### SPECIFICATION

<b>Product Overview</b>	Active Recombinant Horse IL1b protein(Q28386)(63~247 aa), fused with N-terminal His tag, was expressed in E.coli.
<b>Species</b>	Horse
<b>Source</b>	E.coli
<b>ProteinLength</b>	63-247 aa
<b>Form</b>	Lyophilized from sterile PBS, pH7.4, containing 0.01% SKL, 1mM DTT, 5% Trehalose and Proclin300.
<b>Bio-activity</b>	Interleukin 1 beta (IL-1 $\beta$ ) also known as leukocytic pyrogen, leukocytic endogenous mediator, mononuclear cell factor, lymphocyte activating factor and other names, is a member of the interleukin 1 family of cytokines. This cytokine is an important mediator of the inflammatory response, and is involved in a variety of cellular activities, including cell proliferation, differentiation, and apoptosis. It has been reported that IL-1 $\beta$ can induced IL-8 production in A549 cells. To test the bioactivity of IL-1 $\beta$ , A549 cells were seeded into 24-well plate at a density of 1x10 <sup>5</sup> cells/mL, and allowed to attach overnight before treated with certain concentrations of IL-1 $\beta$ for 24h and IL-8 levels in the cell supernatant were determined by ELISA.
<b>Molecular Mass</b>	22.6kDa
<b>Endotoxin</b>	<1.0EU per

 Tel: 1-631-559-9269 1-516-512-3133

 Email: [info@creative-biomart.com](mailto:info@creative-biomart.com)  Fax: 1-631-938-8127

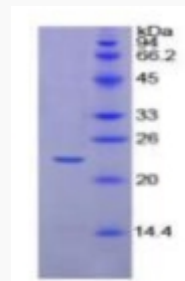
 45-1 Ramsey Road, Shirley, NY 11967, USA

	1µg (determined by the LAL method).
<b>Purity</b>	> 90% as determined by SDS-PAGE.
<b>Storage</b>	Avoid repeated freeze/thaw cycles. Store at -20°C for 12 months. Aliquot and store at -80°C for 12 months.
<b>Reconstitution</b>	Reconstitute in 10mM PBS (pH7.4) to a concentration of 0.1-1.0 mg/mL. Do not vortex.

## GENE INFORMATION

<b>Gene Name</b>	IL1B interleukin 1, beta [ <i>Equus caballus</i> ]
<b>Official Symbol</b>	IL1b
<b>Synonyms</b>	IL1B; interleukin 1, beta; interleukin-1 beta; IL-1 beta; IL-1B;
<b>Gene ID</b>	100034237
<b>mRNA Refseq</b>	NM_001082526
<b>Protein Refseq</b>	NP_001075995

### SDS-PAGE

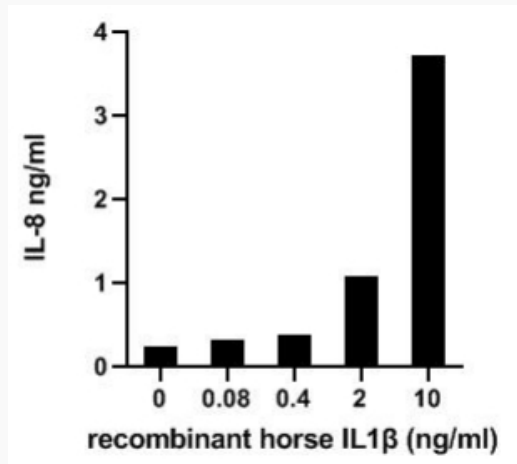


Tel: 1-631-559-9269 1-516-512-3133

Email: [info@creative-biomart.com](mailto:info@creative-biomart.com) Fax: 1-631-938-8127

45-1 Ramsey Road, Shirley, NY 11967, USA

Activity



 Tel: 1-631-559-9269 1-516-512-3133

 Email: [info@creative-biomart.com](mailto:info@creative-biomart.com)  Fax: 1-631-938-8127

 45-1 Ramsey Road, Shirley, NY 11967, USA