

Recombinant Hamster IL2 Protein, Met1-Gln155, C-His tagged

Cat. No. IL2-016H Lot. No. (See product label)

SPECIFICATION

Product Overview	Recombinant Hamster IL2 Protein (Met1-Gln155) with C-His tag was expressed in HEK293.
Species	Hamster
Source	HEK293
ProteinLength	Met1-Gln155
Description	Interleukin-2 (IL-2) is a cytokine signaling molecule that regulates white blood cells. It is produced primarily by T cells after activation by an antigen. IL-2 signals through the IL-2 receptor which leads to the activation of at least 2 major signaling pathways which mediate cell growth, survival, activation induced cell death and differentiation. A pro-inflammatory cytokine, IL-2 activates T cells to produce TNF α as well as IFN γ and controls immune response by contributing to the development of regulatory T cells. Therefore IL-2 plays an important role in antigen specific immune responses.
Form	Lyophilized
Molecular Mass	Predicted Molecular Mass: 17.6 kDa SDS-PAGE: 17.6 kDa
Purity	> 99% by SDS-PAGE
Applications	ELISA and Western Blot Analysis

 Tel: 1-631-559-9269 1-516-512-3133

 Email: info@creative-biomart.com  Fax: 1-631-938-8127

 45-1 Ramsey Road, Shirley, NY 11967, USA

Notes	For Research Use Only.
Storage	2 years at -20 to -80 centigrade as supplied. 1 month at 4 centigrade after reconstitution with preservative. 1 year at -20 to -80 centigrade after reconstitution.
Storage Buffer	Lyophilized from 1xPBS with Trelahose
Shipping	Ambient
Reconstitution	Reconstitute at 25 µg/mL in sterile PBS containing at least 0.1% protein

GENE INFORMATION

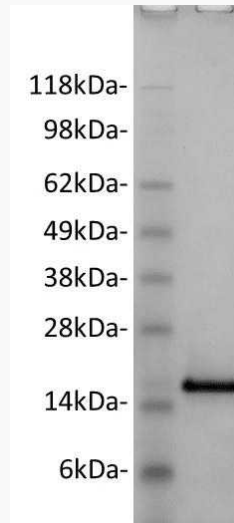
Gene Name	IL2 interleukin 2 [<i>Cricetulus griseus</i> (Chinese hamster)]
Official Symbol	IL2
Synonyms	IL2; interleukin 2; interleukin-2; Interleukin-2; interleukin-2-like protein
Gene ID	100755773
mRNA Refseq	XM_003506764
Protein Refseq	XP_003506812
UniProt ID	B3VBJ5

 Tel: 1-631-559-9269 1-516-512-3133

 Email: info@creative-biomart.com  Fax: 1-631-938-8127

 45-1 Ramsey Road, Shirley, NY 11967, USA

**Hamster IL-2 (2 µg)
on a Coomassie
stained 4-12% SDS-
PAGE gel, reducing
conditions.**



 Tel: 1-631-559-9269 1-516-512-3133

 Email: info@creative-biomart.com  Fax: 1-631-938-8127

 45-1 Ramsey Road, Shirley, NY 11967, USA