

Active GMP Recombinant Porcine IL2 Protein, His-Tagged

Cat. No. IL2-01P Lot. No. (See product label)

SPECIFICATION

Product Overview	GMP Recombinant Porcine IL2 Protein, His-Tagged was expressed in Escherichia coli cell-derived in an animal component free process under cGMP guidelines.
Species	Porcine
Source	E.coli
Description	Interleukin-2 (IL-2) is an interleukin, a type of cytokine signaling molecule in the immune system. It is a 15,5 - 16 kDa protein that regulates the activities of white blood cells (leukocytes, often lymphocytes) that are responsible for immunity. IL-2 is part of the body's natural response to microbial infection, and in discriminating between foreign ("non-self") and "self". IL-2 mediates its effects by binding to IL-2 receptors, which are expressed by lymphocytes.
Form	Lyophilized
Bio-activity	Measure by its ability to induce proliferation in CTLL2 cells. The ED50 for this effect is <0.5 ng/mL.
AA Sequence	MAPTSSSTKNTKKQLEPLLLDLQLLLKEVKNYENADLSRMLTFKFKYMPKQATELKHLLQCLVEELKALEGVLNGLGQSKNSDSANIKESMNNINVTVLELKGSETSFKCEYDDETVTAVEFLNKWITFCQSIYSTLT with polyhistidine tag at the C-terminus
Endotoxin	<0.1 EU per 1 µg of the protein by the LAL method.

 Tel: 1-631-559-9269 1-516-512-3133

 Email: info@creative-biomart.com  Fax: 1-631-938-8127

 45-1 Ramsey Road, Shirley, NY 11967, USA

Purity	>98% as determined by SDS-PAGE. Ni-NTA chromatography
Notes	Please use within one month after protein reconstitution.
Storage	Lyophilized protein should be stored at -20°C. Upon reconstitution, protein aliquots should be stored at -20°C or -80°C.
Storage Buffer	The protein was lyophilized from a solution containing 1X PBS, pH 7.4.
Reconstitution	It is recommended to reconstitute the lyophilized protein in sterile H2O to a concentration not less than 100 µg/mL and incubate the stock solution for at least 20 min to ensure sufficient re-dissolved.

GENE INFORMATION

Gene Name	IL2 interleukin 2 [<i>Sus scrofa</i> (pig)]
Official Symbol	IL2
Synonyms	IL-2; TCGF; POIL2
Gene ID	396868
mRNA Refseq	NM_213861.1
Protein Refseq	NP_999026.1
UniProt ID	P26891

 Tel: 1-631-559-9269 1-516-512-3133

 Email: info@creative-biomart.com  Fax: 1-631-938-8127

 45-1 Ramsey Road, Shirley, NY 11967, USA

kDa

75-

63-

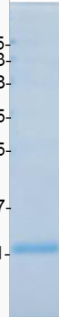
48-


35-

25-


17-

11-



 Tel: 1-631-559-9269 1-516-512-3133

 Email: info@creative-biomart.com  Fax: 1-631-938-8127

 45-1 Ramsey Road, Shirley, NY 11967, USA