

Active Recombinant Horse IL2 protein

Cat. No. IL2-113E Lot. No. (See product label)

SPECIFICATION

Product Overview	Active Recombinant Horse IL2 protein(P37997)(21-149 aa) was expressed in E.coli.
Species	Horse
Source	E.coli
ProteinLength	21-149 aa
Form	Lyophilized from a 0.2 µm filtered concentrated solution in PBS, pH 6.5.
Bio-activity	Fully biologically active when compared to standard. The ED50 as determined by a cell proliferation assay using murine CTLL-2 cells is less than 1.0 µg/ml, corresponding to a specific activity of > 1000 IU/mg.
Molecular Mass	Approximately 14.9 kDa, a single non-glycosylated polypeptide chain containing 129 amino acids.
AASequence	APTSSSKRET QQQLKQLQMD LKLLLEGVNN NKNPKLSKML TFKINMPKKA TELKHLQCLE EELKPLEEML KNFLSKDIKE LMSNINVTVL GLKGSETRFT CEYDDETGTI VEFLNKWITF SQSIFSTMT
Endotoxin	Less than 0.1 EU/g of rEqIL-2 Cys141Ser as determined by LAL method.
Purity	>97% by SDS-PAGE and HPLC analyses.

 Tel: 1-631-559-9269 1-516-512-3133

 Email: info@creative-biomart.com  Fax: 1-631-938-8127

 45-1 Ramsey Road, Shirley, NY 11967, USA

Storage

Use a manual defrost freezer and avoid repeated freeze-thaw cycles. - 12 months from date of receipt, -20 to -70 °C as supplied. - 1 month, 2 to 8 °C under sterile conditions after reconstitution. - 3 months, -20 to -70 °C under sterile conditions after reconstitution.

Reconstitution

We recommend that this vial be briefly centrifuged prior to opening to bring the contents to the bottom. Reconstitute in sterile distilled water or aqueous buffer containing 0.1 % BSA to a concentration of 0.1-1.0 mg/mL. Stock solutions should be apportioned into working aliquots and stored at ≤ -20 °C. Further dilutions should be made in appropriate buffered solutions.

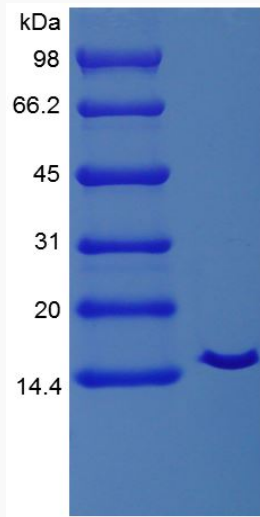
GENE INFORMATION**Gene Name**[IL2 interleukin 2 \[Equus caballus \]](#)**Official Symbol**[IL2](#)**Synonyms**

IL2; interleukin 2; interleukin-2; TCGF; T-cell growth factor; IL-2;

Gene ID[100034204](#)**mRNA Refseq**[NM_001085433](#)**Protein Refseq**[NP_001078902](#) Tel: 1-631-559-9269 1-516-512-3133 Email: info@creative-biomart.com  Fax: 1-631-938-8127 45-1 Ramsey Road, Shirley, NY 11967, USA



SDS-PAGE



Tel: 1-631-559-9269 1-516-512-3133

Email: info@creative-biomart.com Fax: 1-631-938-8127

45-1 Ramsey Road, Shirley, NY 11967, USA