

Active Recombinant Human IL2 protein

Cat. No. IL2-134H Lot. No. (See product label)

SPECIFICATION

Product Overview	Recombinant Human IL2 was expressed in E. coli.
Species	Human
Source	E.coli
Form	Lyophilized from a 0.2µm filtered solution in Tris and NaCL (pH 8.0)
Bio-activity	The ED50 as determined by the dose dependent proliferation of human T cells was found to be less than 0.5 ng/ml
Molecular Mass	15.0 kDa
Endotoxin	<1.0 EU/µg of recombinant protein as determined by the LAL method.
Purity	>95%
Applications	Cell Assay
Storage	The lyophilized protein is stable for at least one year from date of receipt at -70 centigrade. Upon reconstitution, this cytokine can be stored in working aliquots at 2 centigrade - 8 centigrade for one month, or at -20 centigrade for six months, with a carrier protein without detectable loss of activity. Avoid repeated freeze/thaw cycles.
Reconstitution	A quick spin of the vial followed by reconstitution in distilled water to a concentration

 Tel: 1-631-559-9269 1-516-512-3133

 Email: info@creative-biomart.com  Fax: 1-631-938-8127

 45-1 Ramsey Road, Shirley, NY 11967, USA

not less than 0.1 mg/mL. This solution can then be diluted into other buffers.

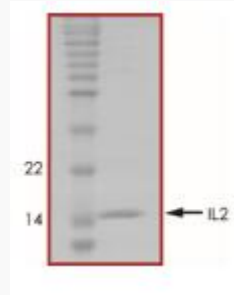
GENE INFORMATION

Gene Name	IL2 interleukin 2 [Homo sapiens]
Official Symbol	IL2
Synonyms	IL2; interleukin 2; interleukin-2; IL 2; T cell growth factor; TCGF; aldesleukin; involved in regulation of T-cell clonal expansion; IL-2; lymphokine;
Gene ID	3558
mRNA Refseq	NM_000586
Protein Refseq	NP_000577
MIM	147680
UniProt ID	P60568
Chromosome Location	4q26-q27
Function	carbohydrate binding; cytokine activity; glycosphingolipid binding; growth factor activity; interleukin-2 receptor binding; interleukin-2 receptor binding; kappa-type opioid receptor binding; kinase activator activity;

 Tel: 1-631-559-9269 1-516-512-3133

 Email: info@creative-biomart.com  Fax: 1-631-938-8127

 45-1 Ramsey Road, Shirley, NY 11967, USA



Tel: 1-631-559-9269 1-516-512-3133

Email: info@creative-biomart.com Fax: 1-631-938-8127

45-1 Ramsey Road, Shirley, NY 11967, USA