

# Active Recombinant Human IL2 Protein (Ala21-Thr153), C-His tagged, Animal-free, Carrier-free

Cat. No. IL2-165H Lot. No. (See product label)

## SPECIFICATION

<b>Product Overview</b>	Recombinant Human IL2 Protein (Ala21-Thr153) with C-His tag was expressed in E. coli and Animal-free as well as Carrier-free.
<b>Species</b>	Human
<b>Source</b>	E.coli
<b>ProteinLength</b>	Ala21-Thr153
<b>Description</b>	Interleukin-2 (IL-2) is a 15.5 kDa four bundle, immuno-modulatory cytokine which is expressed predominately by antigen-simulated CD4+ T cells, CD8+ T cells, natural killer (NK) cells, and dendritic cells (DC). IL-2 plays a fundamental role in promoting NK cell proliferation, cytotoxicity, and B cells differentiation. IL-2 modulate T cell differentiation programs, promoting naïve CD4+ T cell differentiation into T helper-1 (Th1) and T helper-2 (Th2) cells.
<b>Form</b>	Lyophilized
<b>Bio-activity</b>	Measure by its ability to induce proliferation in CTLL-2 cells. The ED50 for this effect is < 3 ng/mL. The specific activity of recombinant human IL-2 is >5 × 10 <sup>6</sup> IU/mg.
<b>Molecular Mass</b>	The protein has a calculated MW of 16.4 kDa. The protein migrates as 13 kDa under reducing condition (SDS-PAGE analysis).

 Tel: 1-631-559-9269 1-516-512-3133

 Email: [info@creative-biomart.com](mailto:info@creative-biomart.com)  Fax: 1-631-938-8127

 45-1 Ramsey Road, Shirley, NY 11967, USA

<b>Endotoxin</b>	< 0.01 EU/μg of the protein by the LAL method.
<b>Purity</b>	>98% as determined by SDS-PAGE analysis.
<b>Storage</b>	This product is stable after storage at: -20 centigrade for 12 months in lyophilized state from date of receipt. -20 or -80 centigrade for 1 month under sterile conditions after reconstitution. Avoid repeated freeze/thaw cycles.
<b>Storage Buffer</b>	Lyophilized from a 0.2 μm filtered solution of PBS, pH 8.0.
<b>Reconstitution</b>	It is recommended to reconstitute the lyophilized protein in sterile H <sub>2</sub> O to a concentration not less than 200 μg/mL and incubate the stock solution for at least 20 min to ensure sufficient re-dissolved.
<b>Shipping</b>	The product is shipped with polar packs. Upon receipt, store it immediately at -20 centigrade or lower for long term storage.

## GENE INFORMATION

<b>Gene Name</b>	IL2 interleukin 2 [ Homo sapiens (human) ]
<b>Official Symbol</b>	IL2
<b>Synonyms</b>	IL2; interleukin 2; interleukin-2; IL 2; T cell growth factor; TCGF; aldesleukin; involved in regulation of T-cell clonal expansion; IL-2; lymphokine;
<b>Gene ID</b>	3558
<b>mRNA Refseq</b>	NM_000586

 Tel: 1-631-559-9269 1-516-512-3133

 Email: [info@creative-biomart.com](mailto:info@creative-biomart.com)  Fax: 1-631-938-8127

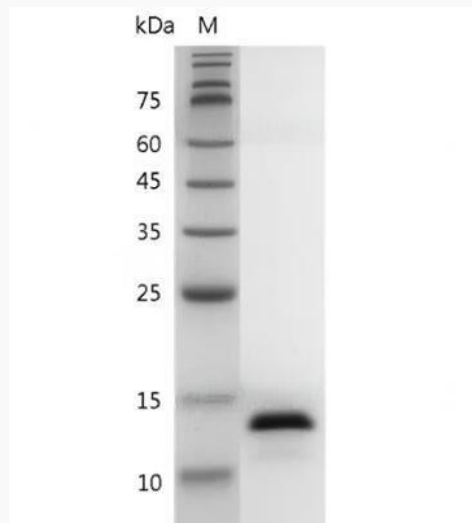
 45-1 Ramsey Road, Shirley, NY 11967, USA

**Protein Refseq** NP\_000577

**MIM** 147680

**UniProt ID** P60568

**SDS-PAGE analysis  
of recombinant  
human IL-2**



 Tel: 1-631-559-9269 1-516-512-3133

 Email: [info@creative-biomart.com](mailto:info@creative-biomart.com)  Fax: 1-631-938-8127

 45-1 Ramsey Road, Shirley, NY 11967, USA