

# Recombinant Human IL2 Protein, MYC/DDK-tagged, C13 and N15-labeled

**Cat. No.** IL2-349H    **Lot. No.** (See product label)

## SPECIFICATION

<b>Product Overview</b>	IL2 MS Standard C13 and N15-labeled recombinant protein (NP_000577) with a C-terminal MYC/DDK tag, was expressed in HEK293 cells.
<b>Species</b>	Human
<b>Source</b>	HEK293
<b>Description</b>	The protein encoded by this gene is a secreted cytokine that is important for the proliferation of T and B lymphocytes. The receptor of this cytokine is a heterotrimeric protein complex whose gamma chain is also shared by interleukin 4 (IL4) and interleukin 7 (IL7). The expression of this gene in mature thymocytes is monoallelic, which represents an unusual regulatory mode for controlling the precise expression of a single gene. The targeted disruption of a similar gene in mice leads to ulcerative colitis-like disease, which suggests an essential role of this gene in the immune response to antigenic stimuli. [provided by RefSeq, Jul 2008]
<b>Molecular Mass</b>	17.6 kDa
<b>AA Sequence</b>	MYRMQLLSCIALSLALVTNSAPTSSSTKKTQLQLEHLLLDLQMILNGINNYKNPKLTR MLTFKFYMPKKATELKHLQCLEELKPLEEVLNLAQSKNFHLRPRDLISNINVIVLELK GSETTFMCEYADETATIVEFLNRWITFCQSIISTLTTRTRPLEQKLISEEDLAANDILDY KDDDDKV
<b>Purity</b>	> 80% as determined by SDS-PAGE and Coomassie blue staining

 Tel: 1-631-559-9269    1-516-512-3133

 Email: [info@creative-biomart.com](mailto:info@creative-biomart.com)     Fax: 1-631-938-8127

 45-1 Ramsey Road, Shirley, NY 11967, USA

<b>Stability</b>	Stable for 3 months from receipt of products under proper storage and handling conditions.
<b>Storage</b>	Store at -80 centigrade. Avoid repeated freeze-thaw cycles.
<b>Concentration</b>	50 µg/mL as determined by BCA
<b>Storage Buffer</b>	100 mM glycine, 25 mM Tris-HCl, pH 7.3.

## GENE INFORMATION

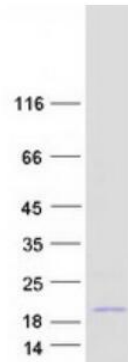
<b>Gene Name</b>	IL2 interleukin 2 [ Homo sapiens (human) ]
<b>Official Symbol</b>	IL2
<b>Synonyms</b>	IL2; interleukin 2; interleukin-2; IL 2; T cell growth factor; TCGF; aldesleukin; involved in regulation of T-cell clonal expansion; IL-2; lymphokine;
<b>Gene ID</b>	3558
<b>mRNA Refseq</b>	NM_000586
<b>Protein Refseq</b>	NP_000577
<b>MIM</b>	147680
<b>UniProt ID</b>	P60568

 Tel: 1-631-559-9269 1-516-512-3133

 Email: [info@creative-biomart.com](mailto:info@creative-biomart.com)  Fax: 1-631-938-8127

 45-1 Ramsey Road, Shirley, NY 11967, USA

**SDS-PAGE**



 Tel: 1-631-559-9269 1-516-512-3133

 Email: [info@creative-biomart.com](mailto:info@creative-biomart.com)  Fax: 1-631-938-8127

 45-1 Ramsey Road, Shirley, NY 11967, USA