

## Recombinant Human IL2 protein, His-tagged

Cat. No. IL2-5446H Lot. No. (See product label)

### SPECIFICATION

|                         |   |
|-------------------------|---|
| <b>Product Overview</b> | Recombinant Human IL2 protein(P60568)(21-153aa), fused to N-terminal His tag, was expressed in Yeast.   |
| <b>Species</b>          | Human   |
| <b>Source</b>           | Yeast   |
| <b>ProteinLength</b>    | 21-153aa  |
| <b>Form</b>             | If the delivery form is liquid, the default storage buffer is Tris/PBS-based buffer, 5%-50% glycerol. If the delivery form is lyophilized powder, the buffer before lyophilization is Tris/PBS-based buffer, 6% Trehalose, pH 8.0.                            |
| <b>Molecular Mass</b>   | 17.4 kDa  |
| <b>Purity</b>           | Greater than 90% as determined by SDS-PAGE.   |
| <b>Storage</b>          | Store at -20°C/-80°C upon receipt, aliquoting is necessary for mutiple use. Avoid repeated freeze-thaw cycles.  |
| <b>Reconstitution</b>   | Please reconstitute protein in deionized sterile water to a concentration of 0.1-1.0 mg/mL. We recommend to add 5-50% of glycerol (final concentration) and aliquot for long-term storage at -20°C/-80°C. Our default final concentration of glycerol is 50%. |

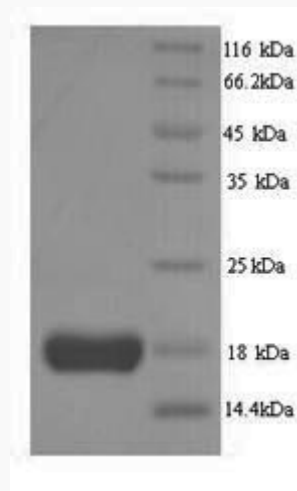
### GENE INFORMATION

 Tel: 1-631-559-9269 1-516-512-3133

 Email: [info@creative-biomart.com](mailto:info@creative-biomart.com)  Fax: 1-631-938-8127

 45-1 Ramsey Road, Shirley, NY 11967, USA

|                        |  |
|------------------------|--|
| <b>Gene Name</b>       | IL2 interleukin 2 [ Homo sapiens ]   |
| <b>Official Symbol</b> | IL2  |
| <b>Synonyms</b>        | IL2; interleukin 2; interleukin-2; IL 2; T cell growth factor; TCGF; aldesleukin; involved in regulation of T-cell clonal expansion; IL-2; lymphokine; |
| <b>Gene ID</b>         | 3558   |
| <b>mRNA Refseq</b>     | NM_000586  |
| <b>Protein Refseq</b>  | NP_000577  |
| <b>MIM</b>             | 147680   |
| <b>UniProt ID</b>      | P60568   |

**SDS-PAGE**


 Tel: 1-631-559-9269 1-516-512-3133

 Email: [info@creative-biomart.com](mailto:info@creative-biomart.com)  Fax: 1-631-938-8127

 45-1 Ramsey Road, Shirley, NY 11967, USA