

## Active Recombinant Human IL2 Protein, His-tagged

Cat. No. IL2-636H Lot. No. (See product label)

### SPECIFICATION

<b>Product Overview</b>	Human IL2 (133 a.a.) full-length recombinant protein with His tag expressed in Barley grain ( <i>Hordeum vulgare</i> ).
<b>Species</b>	Human
<b>Source</b>	Plants
<b>Description</b>	This gene is a member of the interleukin 2 (IL2) cytokine subfamily which includes IL4, IL7, IL9, IL15, IL21, erythropoietin, and thrombopoietin. The protein encoded by this gene is a secreted cytokine produced by activated CD4+ and CD8+ T lymphocytes, that is important for the proliferation of T and B lymphocytes. The receptor of this cytokine (IL2R) is a heterotrimeric protein complex whose gamma chain is also shared by IL4 and IL7. The expression of this gene in mature thymocytes is monoallelic, which represents an unusual regulatory mode for controlling the precise expression of a single gene. The targeted disruption of a similar gene in mice leads to ulcerative colitis-like disease, which suggests an essential role of this gene in the immune response to antigenic stimuli.
<b>Form</b>	Lyophilized
<b>Bio-activity</b>	Bioactivity of recombinant human IL2 is assayed by measuring its dose dependent effect on proliferation of CTLL-2 cells. The ED50 for this effect is typically < 0.25 ng/mL, corresponding to a specific activity > 4×10 <sup>6</sup> U/mg.
<b>Endotoxin</b>	< 0.005

 Tel: 1-631-559-9269 1-516-512-3133

 Email: [info@creative-biomart.com](mailto:info@creative-biomart.com)  Fax: 1-631-938-8127

 45-1 Ramsey Road, Shirley, NY 11967, USA

	ng/μg protein (0.05 EU/μg) as measured by turbidimetric kinetic assay
<b>Purity</b>	> 98% by SDS-PAGE
<b>Applications</b>	Western Blot (Recombinant protein) Functional Study SDS-PAGE
<b>Storage</b>	Store at -20 centigrade on dry atmosphere. After reconstitution with sterile water to a concentration of no less than 100 μg/mL, store at -20 centigrade. For long term storage it is recommended to add a carrier protein (0.1% HSA or BSA). Aliquot to avoid repeated freezing and thawing.
<b>Concentration</b>	100 μg/mL
<b>Storage Buffer</b>	Lyophilized from PBS, pH 7.2
<b>Reconstitution</b>	Sterile water
<b>GENE INFORMATION</b>	
<b>Gene Name</b>	IL2 interleukin 2 [ Homo sapiens (human) ]
<b>Official Symbol</b>	IL2
<b>Synonyms</b>	IL2; interleukin 2; IL-2; TCGF; lymphokine; interleukin-2; T cell growth factor; aldesleukin; involved in regulation of T-cell clonal expansion
<b>Gene ID</b>	3558

 Tel: 1-631-559-9269 1-516-512-3133

 Email: [info@creative-biomart.com](mailto:info@creative-biomart.com)  Fax: 1-631-938-8127

 45-1 Ramsey Road, Shirley, NY 11967, USA

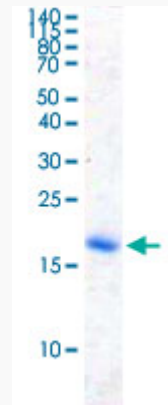
**mRNA Refseq**      [NM\\_000586](#)

**Protein Refseq**      [NP\\_000577](#)

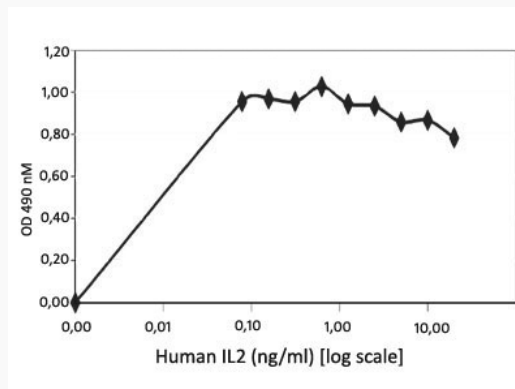
**MIM**      [147680](#)

**UniProt ID**      [P60568](#)

**SDS-PAGE Stained  
with Coomassie Blue**



**Result of activity  
analysis**



 Tel: 1-631-559-9269    1-516-512-3133

 Email: [info@creative-biomart.com](mailto:info@creative-biomart.com)     Fax: 1-631-938-8127

 45-1 Ramsey Road, Shirley, NY 11967, USA