

Recombinant Human IL2 protein

Cat. No. IL2-7654H Lot. No. (See product label)

SPECIFICATION

| | |
|-------------------------|---|
| Product Overview | Recombinant Human IL2 protein(P60568)(Ala21-Thr153) was expressed in E.coli. |
| Species | Human |
| Source | E.coli |
| ProteinLength | Ala21-Thr153 |
| Tag | Non |
| Form | Lyophilized from 0.22µm filtered solution in PBS (pH 7.4). Normally 5% trehalose is added as protectant before lyophilization. |
| Bio-activity | Human IL-2 R alpha, His Tag captured on CM5 Chip via anti-his antibody can bind Human IL-2, No Tag with an affinity constant of 16.82 nM as determined in SPR assay (Biacore T200). |
| Molecular Mass | The protein has a predicted 15.5 kDa same as Tris-Bis PAGE result. |
| Endotoxin | Less than 1EU per µg by the LAL method. |
| Purity | > 95% as determined by Tris-Bis PAGE; > 95% as determined by HPLC |
| Storage | Reconstituted protein stable at -80°C for 12 months, 4°C for 1 week. Use a manual defrost freezer and avoid repeated freeze-thaw cycles. |

 Tel: 1-631-559-9269 1-516-512-3133

 Email: info@creative-biomart.com  Fax: 1-631-938-8127

 45-1 Ramsey Road, Shirley, NY 11967, USA

Reconstitution Centrifuge tubes before opening. Reconstituting to a concentration more than 100 µg/ml is recommended. Dissolve the lyophilized protein in distilled water.

GENE INFORMATION

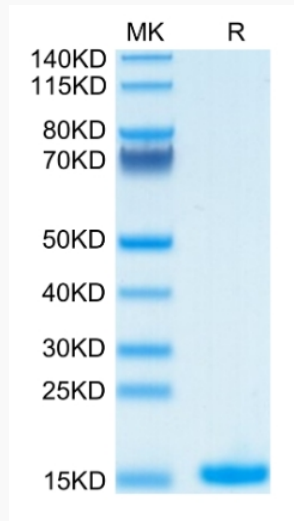
| | |
|------------------------|--|
| Gene Name | IL2 interleukin 2 [Homo sapiens] |
| Official Symbol | IL2 |
| Synonyms | IL2; interleukin 2; interleukin-2; IL 2; T cell growth factor; TCGF; aldesleukin; involved in regulation of T-cell clonal expansion; IL-2; lymphokine; |
| Gene ID | 3558 |
| mRNA Refseq | NM_000586 |
| Protein Refseq | NP_000577 |
| MIM | 147680 |
| UniProt ID | P60568 |

 Tel: 1-631-559-9269 1-516-512-3133

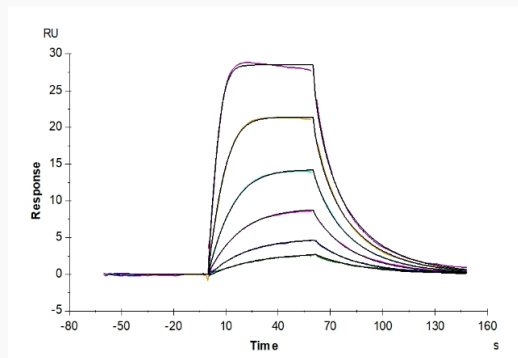
 Email: info@creative-biomart.com  Fax: 1-631-938-8127

 45-1 Ramsey Road, Shirley, NY 11967, USA

Tris-Bis PAGE



SPR Data



 Tel: 1-631-559-9269 1-516-512-3133

 Email: info@creative-biomart.com  Fax: 1-631-938-8127

 45-1 Ramsey Road, Shirley, NY 11967, USA