

## Recombinant Active Human IL20 Protein, His-tagged(C-ter)

Cat. No. IL20-172H Lot. No. (See product label)

### SPECIFICATION

<b>Product Overview</b>	Recombinant Active Human IL20 Protein with His tag (C-ter) was expressed in E. coli.
<b>Species</b>	Human
<b>Source</b>	E.coli
<b>Description</b>	The protein encoded by this gene is a cytokine structurally related to interleukin 10 (IL10). This cytokine has been shown to transduce its signal through signal transducer and activator of transcription 3 (STAT3) in keratinocytes. A specific receptor for this cytokine is found to be expressed in skin and upregulated dramatically in psoriatic skin, suggesting a role for this protein in epidermal function and psoriasis. [provided by RefSeq, Jul 2008]
<b>Form</b>	Powder
<b>Bio-activity</b>	Determined by its ability to chemoattract BaF3 mouse pro-B cells transfected with human IL-20R alpha and IL-20R beta. The ED50 for this effect is < 0.2 ng/mL.
<b>AA Sequence</b>	MLKTLNLGSCVIATNLQEIRNGFSEIRGVSQAKDGNIDIRILRRTESLQDTKPANRCCL LRHLLRLYLDRVFKNYQTPDHYTLRKISSLANSFLTIKKDLRLCHAHMTCHCGEEAMK KYSQILSHFEKLEPQAQAVVKALGELDILLQWMEETE
<b>Endotoxin</b>	Endotoxin level is less than 0.1 EU/μg of the protein, as determined by the LAL test.
<b>Purity</b>	> 98% (by SDS-PAGE)

 Tel: 1-631-559-9269 1-516-512-3133

 Email: [info@creative-biomart.com](mailto:info@creative-biomart.com)  Fax: 1-631-938-8127

 45-1 Ramsey Road, Shirley, NY 11967, USA

<b>Applications</b>	SDS-PAGE
<b>Notes</b>	For laboratory research only, not for drug, diagnostic or other use.
<b>Storage</b>	Lyophilized protein should be stored at -20°C. After reconstitution, aliquot and store at -20°C or -80°C for up to one month. Storage in frost free freezers is not recommended. Avoid repeated freeze/thaw cycles. Suggest spin the vial prior to opening.
<b>Storage Buffer</b>	PBS (pH 8.0)
<b>Reconstitution</b>	It is recommended to reconstitute the lyophilized protein in sterile water to a concentration not less than 100 µg/mL and incubate the stock solution for at least 20 min at room temperature to make sure the protein is dissolved completely.

## GENE INFORMATION

<b>Gene Name</b>	IL20 interleukin 20 [ Homo sapiens ]
<b>Official Symbol</b>	IL20
<b>Synonyms</b>	IL20; interleukin 20; interleukin-20; IL 20; IL10D; ZCYTO10; cytokine Zcyto10; four alpha helix cytokine; IL-20; MGC96907;
<b>Gene ID</b>	50604
<b>mRNA Refseq</b>	NM_018724
<b>Protein Refseq</b>	NP_061194
<b>MIM</b>	605619

 Tel: 1-631-559-9269 1-516-512-3133

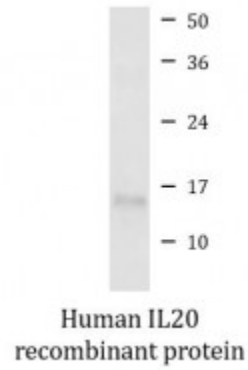
 Email: [info@creative-biomart.com](mailto:info@creative-biomart.com)  Fax: 1-631-938-8127

 45-1 Ramsey Road, Shirley, NY 11967, USA

UniProt ID

Q9NYY1

SDS-PAGE



 Tel: 1-631-559-9269 1-516-512-3133

 Email: [info@creative-biomart.com](mailto:info@creative-biomart.com)  Fax: 1-631-938-8127

 45-1 Ramsey Road, Shirley, NY 11967, USA