

Recombinant Human IL20 protein

Cat. No. IL20-278H Lot. No. (See product label)

SPECIFICATION

Product Overview	Recombinant Human IL20 protein was expressed in Escherichia coli.
Species	Human
Source	E.coli
ProteinLength	153
Description	Human Interleukin-20 (IL-20) is encoded by the IL20 gene located on the chromosome 1 and belongs to the IL-10 family that including IL-10, IL-19, IL-22, IL-24, and IL-26. It is secreted by activated keratinocytes and monocytes, and signals through two distinct cell-surface receptor complexes on keratinocytes and other epithelial cells. IL-20 has functions of regulating proliferation and differentiation of keratinocytes during inflammation, and causing cell expansion of multipotential hematopoietic progenitor cells.
Form	Lyophilized from a 0.2µm filtered concentrated solution in PBS, pH 7.2, with trehalose.
Bio-activity	Fully biologically active when compared to standard. The ED50 as determined by a cell proliferation assay using human IL-20Rα and human IL-20Rβ co-transfected murine BaF3 pro-B cells is less than 0.5 ng/ml, corresponding to a specific activity of > 2.0 × 10 ⁶ IU/mg.
Molecular Mass	Approximately 17.6 kDa, a single non-glycosylated polypeptide chain containing 153

 Tel: 1-631-559-9269 1-516-512-3133

 Email: info@creative-biomart.com  Fax: 1-631-938-8127

 45-1 Ramsey Road, Shirley, NY 11967, USA

	amino acids.
AA Sequence	MLKTLNLGSCVIATNLQEIRNGFSEIRGSVQAKDGNIDIRILRRTESLQDTKPANRCCL LRHLLRLYLDRVFKNYQTPDHYTLRKISSLANSFLTIKKDLRLCHAHMTCHCGEEAMK KYSQILSHFEKLEPQAAVVKALGELDILLQWMEETE
Endotoxin	Less than 1 EU/g of rHuIL-20 as determined by LAL method.
Purity	>95% by SDS-PAGE and HPLC analysis.
Storage	Use a manual defrost freezer and avoid repeated freeze-thaw cycles. 12 months from date of receipt, -20 to -70 centigrade as supplied. 1 month, 2 to 8 centigrade under sterile conditions after reconstitution. 3 months, -20 to -70 centigrade under sterile conditions after reconstitution.
Reconstitution	We recommend that this vial be briefly centrifuged prior to opening to bring the contents to the bottom. Reconstitute in sterile distilled water or aqueous buffer containing 0.1 % BSA to a concentration of 0.1-1.0 mg/mL. Stock solutions should be apportioned into working aliquots and stored at ≤-20 centigrade. Further dilutions should be made in appropriate buffered solutions.

GENE INFORMATION

Gene Name	IL20
Official Symbol	IL20
Synonyms	IL20; interleukin 20; interleukin-20; IL 20; IL10D; ZCYTO10; cytokine Zcyto10; four alpha helix cytokine; IL-20; MGC96907;
Gene ID	50604

 Tel: 1-631-559-9269 1-516-512-3133

 Email: info@creative-biomart.com  Fax: 1-631-938-8127

 45-1 Ramsey Road, Shirley, NY 11967, USA

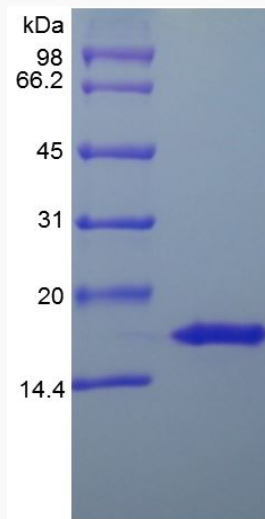
mRNA Refseq [NM_018724](#)

Protein Refseq [NP_061194](#)

MIM [605619](#)

UniProt ID [Q9NYY1](#)

SDS-PAGE of IL20-
278H



 Tel: 1-631-559-9269 1-516-512-3133

 Email: info@creative-biomart.com  Fax: 1-631-938-8127

 45-1 Ramsey Road, Shirley, NY 11967, USA