

Recombinant Human IL20 Protein (Gly24-Glu176), N-His tagged

Cat. No. IL20-3565H **Lot. No.** (See product label)

SPECIFICATION

Product Overview	Recombinant human IL20 (Gly24-Glu176) protein fused with the N-His tag was expressed in E. coli.
Species	Human
Source	E.coli
ProteinLength	Gly24-Glu176
Molecular Mass	19.88 kDa
Purity	>90 % as determined by SDS-PAGE.
Notes	For research use only.
Storage	Use a manual defrost freezer and avoid repeated freeze thaw cycles. Store at 2 to 8 centigrade for one week. Store at -20 to -80 centigrade for twelve months from the date of receipt.
Storage Buffer	0.01M PBS, pH 7.4, 0.02 % NLS
Reconstitution	Reconstitute in sterile water for a stock solution.
Shipping	In general, proteins are provided as lyophilized powder/frozen liquid. They are

 Tel: 1-631-559-9269 1-516-512-3133

 Email: info@creative-biomart.com  Fax: 1-631-938-8127

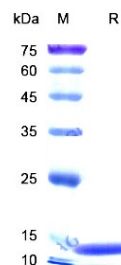
 45-1 Ramsey Road, Shirley, NY 11967, USA

shipped out with dry ice/blue ice unless customers require otherwise.

GENE INFORMATION

Gene Name	IL20 interleukin 20 [Homo sapiens (human)]
Official Symbol	IL20
Synonyms	IL20; interleukin 20; interleukin-20; IL 20; IL10D; ZCYTO10; cytokine Zcyto10; four alpha helix cytokine; IL-20; MGC96907;
Gene ID	50604
mRNA Refseq	NM_018724
Protein Refseq	NP_061194
MIM	605619
UniProt ID	Q9NYY1

SDS-PAGE



 Tel: 1-631-559-9269 1-516-512-3133

 Email: info@creative-biomart.com  Fax: 1-631-938-8127

 45-1 Ramsey Road, Shirley, NY 11967, USA