

Active GMP Recombinant Human IL20 protein

Cat. No. IL20-4333HG Lot. No. (See product label)

SPECIFICATION

Product Overview	Recombinant Human IL20 was produced in E. coli using non-animal reagents in an animal-free facility under cGMP guidelines.
Species	Human
Source	E.coli
Description	Human Interleukin-20 (IL-20) is encoded by the IL20 gene located on the chromosome 1 and belongs to the IL-10 family that including IL-10, IL-19, IL-22, IL-24, and IL-26. It is secreted by activated keratinocytes and monocytes, and signals through two distinct cell-surface receptor complexes on keratinocytes and other epithelial cells. IL-20 has functions of regulating proliferation and differentiation of keratinocytes during inflammation, and causing cell expansion of multipotential hematopoietic progenitor cells.
Form	Lyophilized from a 0.2 µ filtered concentrated solution in PBS, pH 7.2, with trehalose.
Bio-activity	Fully biologically active when compared to standard. The ED50 as determined by a cell proliferation assay using human IL-20R α and human IL-20R β co-transfected murine BaF3 pro-B cells is less than 0.5 ng/ml, corresponding to a specific activity of > 2.0 \times 10 ⁶ IU/mg.
Molecular Mass	Approximately 17.6 kDa, a single non-glycosylated polypeptide chain containing 153 amino acids.

 Tel: 1-631-559-9269 1-516-512-3133

 Email: info@creative-biomart.com  Fax: 1-631-938-8127

 45-1 Ramsey Road, Shirley, NY 11967, USA

AA Sequence	MLKTLNLGSCVIATNLQEIRNGFSEIRGSVQAKDGNIDIRILRRTESLQDTKPANRCCL LRHLLRLYLDRVFKNYQTPDHYTLRKISSLANSFLTIKKDLRLCHAHMTCHCGEEAMK KYSQILSHFEKLEPQAAVVKALGELDILLQWMEETE
Endotoxin	Less than 1 EU/g of rHuIL-20 as determined by LAL method.
Purity	> 95 % by SDS-PAGE and HPLC analyses.
Storage	This lyophilized preparation is stable at 2-8 centigrade, but should be kept at -20 centigrade for long term storage, preferably desiccated. Upon reconstitution, the preparation is stable for up to one week at 2-8 centigrade. For maximal stability, apportion the reconstituted preparation into working aliquots and store at -20 centigrade to -70 centigrade. Avoid repeated freeze/thaw cycles.
Reconstitution	Reconstitute in sterile distilled water or aqueous buffer containing 0.1 % BSA to a concentration of 0.1-1.0 mg/mL. Stock solutions should be apportioned into working aliquots and stored at ≤ -20 centigrade. Further dilutions should be made in appropriate buffered solutions.
Quality Statement	Our GMP proteins are produced according to relevant sections of the following documents: WHO TRS, No. 822, 1992 Annex 1, Good Manufacturing Practices for Biological Products; USP Chapter 1043, Ancillary Materials for Cell, Gene and Tissue-Engineered Products and USP Chapter 92, Growth Factors and Cytokines Used in Cell Therapy Manufacturing.
Shipping	The product is shipped at ambient temperature. Upon receipt, store it immediately at the recommended temperature.

GENE INFORMATION

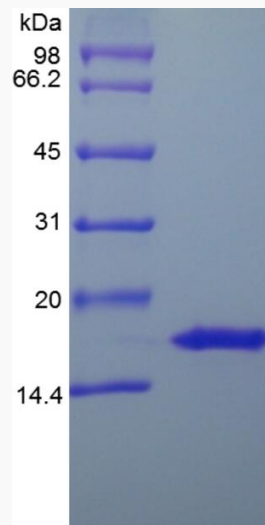
Gene Name [IL20 interleukin 20 \[Homo sapiens \]](#)

 Tel: 1-631-559-9269 1-516-512-3133

 Email: info@creative-biomart.com  Fax: 1-631-938-8127

 45-1 Ramsey Road, Shirley, NY 11967, USA

Official Symbol	IL20
Synonyms	IL20; interleukin 20; interleukin-20; IL 20; IL10D; ZCYTO10; cytokine Zcyto10; four alpha helix cytokine; IL-20; MGC96907;
Gene ID	50604
mRNA Refseq	NM_018724
Protein Refseq	NP_061194
MIM	605619
UniProt ID	Q9NYY1



 Tel: 1-631-559-9269 1-516-512-3133

 Email: info@creative-biomart.com  Fax: 1-631-938-8127

 45-1 Ramsey Road, Shirley, NY 11967, USA