

Recombinant Human IL20RA protein, His & GST-tagged

Cat. No. IL20RA-1325H Lot. No. (See product label)

SPECIFICATION

Product Overview	Recombinant Human IL20RA aa. (Met269~Trp545 (Accession# Q9UHF4) fused with N-terminal His & GST tag was produced in E. coli cells.
Species	Human
Source	E.coli
ProteinLength	Met269~Trp545
Description	This gene encodes a member of the type II cytokine receptor family. The encoded protein is a subunit of the receptor for interleukin 20, a cytokine that may be involved in epidermal function. The interleukin 20 receptor is a heterodimeric complex consisting of the encoded protein and interleukin 20 receptor beta. This gene and interleukin 20 receptor beta are highly expressed in skin, and are upregulated in psoriasis. Alternative splicing results in multiple transcript variants.
Form	Freeze-dried powder
Molecular Mass	Predicted Molecular Mass: 61.1kDa
Endotoxin	<1.0EU per 1g (determined by the LAL method)
Purity	>90%
Characteristic	The isoelectric point is 4.1.

 Tel: 1-631-559-9269 1-516-512-3133

 Email: info@creative-biomart.com  Fax: 1-631-938-8127

 45-1 Ramsey Road, Shirley, NY 11967, USA

Applications	SDS-PAGE; WB; ELISA; IP.
Stability	The thermal stability is described by the loss rate. The loss rate was determined by accelerated thermal degradation test, that is, incubate the protein at 37°C for 48h, and no obvious degradation and precipitation were observed. The loss rate is less than 5% within the expiration date under appropriate storage condition.
Storage	Avoid repeated freeze/thaw cycles. Store at 2-8°C for one month. Aliquot and store at -80°C for 12 months.
Storage buffer	Supplied as lyophilized form in PBS, pH7.4, containing 5% trehalose, 0.01% sarcosyl
Reconstitution	Reconstitute in sterile PBS, pH7.2-pH7.4.

GENE INFORMATION

Gene Name	IL20RA interleukin 20 receptor subunit alpha [Homo sapiens (human)]
Official Symbol	IL20RA
Synonyms	IL20RA; interleukin 20 receptor subunit alpha; CRF2-8; IL-20R1; IL-20RA; IL-20R-alpha; interleukin-20 receptor subunit alpha; class II cytokine receptor ZCYTOR7; cytokine receptor family 2 member 8; interleukin 20 receptor alpha subunit; interleukin 20 receptor, alpha; interleukin-20 receptor I
Gene ID	53832
mRNA Refseq	NM_001278722.1
Protein Refseq	NP_001265651.1

 Tel: 1-631-559-9269 1-516-512-3133

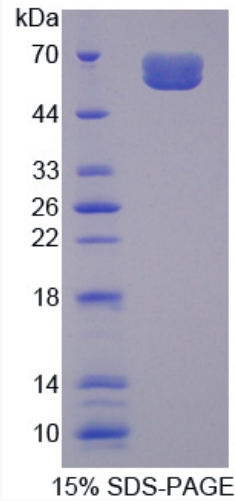
 Email: info@creative-biomart.com  Fax: 1-631-938-8127

 45-1 Ramsey Road, Shirley, NY 11967, USA

UniProt ID

Q9UHF4

SDS-PAGE



 Tel: 1-631-559-9269 1-516-512-3133

 Email: info@creative-biomart.com  Fax: 1-631-938-8127

 45-1 Ramsey Road, Shirley, NY 11967, USA