

Recombinant Human IL20RB Protein (Ala37-Glu290), N-His tagged

Cat. No. IL20RB-3669H Lot. No. (See product label)

SPECIFICATION

Product Overview	Recombinant human IL20RB (Ala37-Glu290) protein fused with the N-His tag was expressed in E. coli.
Species	Human
Source	E.coli
ProteinLength	Ala37-Glu290
Molecular Mass	30.82 kDa
Purity	>90 % as determined by SDS-PAGE.
Notes	For research use only.
Storage	Use a manual defrost freezer and avoid repeated freeze thaw cycles. Store at 2 to 8 centigrade for one week. Store at -20 to -80 centigrade for twelve months from the date of receipt.
Storage Buffer	0.01M PBS, pH 7.4, 0.02 % NLS
Reconstitution	Reconstitute in sterile water for a stock solution.
Shipping	In general, proteins are provided as lyophilized powder/frozen liquid. They are

 Tel: 1-631-559-9269 1-516-512-3133

 Email: info@creative-biomart.com  Fax: 1-631-938-8127

 45-1 Ramsey Road, Shirley, NY 11967, USA

shipped out with dry ice/blue ice unless customers require otherwise.

GENE INFORMATION

Gene Name IL20RB interleukin 20 receptor beta [Homo sapiens (human)]

Official Symbol IL20RB

Synonyms IL20RB; interleukin 20 receptor beta; fibronectin type III domain containing 6, FNDC6; interleukin-20 receptor subunit beta; DIRS1; IL 20R2; MGC34923; IL-20RB; IL-20R-beta; interleukin-20 receptor II; IL-20 receptor subunit beta; fibronectin type III domain containing 6; FNDC6; IL-20R2;

Gene ID 53833

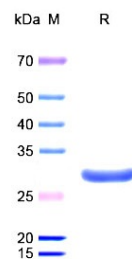
mRNA Refseq NM_144717

Protein Refseq NP_653318

MIM 605621

UniProt ID Q6UXL0

SDS-PAGE



 Tel: 1-631-559-9269 1-516-512-3133

 Email: info@creative-biomart.com  Fax: 1-631-938-8127

 45-1 Ramsey Road, Shirley, NY 11967, USA