

## Active Recombinant Dog IL21 Protein

**Cat. No.** IL21-009D    **Lot. No.** (See product label)

### SPECIFICATION

<b>Product Overview</b>	Recombinant canine IL-21, was expressed in E. coli and purified by using conventional chromatography techniques.
<b>Species</b>	Dog
<b>Source</b>	E.coli
<b>Description</b>	<p>Cytokine with immunoregulatory activity. May promote the transition between innate and adaptive immunity. Induces the production of IgG1 and IgG3 in B-cells. Implicated in the generation and maintenance of T follicular helper (Tfh) cells and the formation of germinal-centers. Together with IL6, control the early generation of Tfh cells and are critical for an effective antibody response to acute viral infection. May play a role in proliferation and maturation of natural killer (NK) cells in synergy with IL15. May regulate proliferation of mature B- and T-cells in response to activating stimuli. In synergy with IL15 and IL18 stimulates interferon gamma production in T-cells and NK cells. During T-cell mediated immune response may inhibit dendritic cells (DC) activation and maturation.</p>
<b>Form</b>	Liquid
<b>Bio-activity</b>	The activity is determined by the IFN-g ELISA in a using NK-92 human natural killer cells. The ED50 range $\leq 2$ ng/mL.
<b>Molecular Mass</b>	15 kDa

 Tel: 1-631-559-9269    1-516-512-3133

 Email: [info@creative-biomart.com](mailto:info@creative-biomart.com)     Fax: 1-631-938-8127

 45-1 Ramsey Road, Shirley, NY 11967, USA

<b>AA Sequence</b>	MHKSSFQEQLLLIRMRQLIDIVDQLKNYVNDLDPESLPAPEDVKRHCERSAFSCFQ KVQLKAANTGGNEQIINVLTQQLKRKLPPTNAGRRQKHRPACPCDSYEKAPPKEFL ERLKSIIQKMIHQHLS
<b>Endotoxin</b>	< 1 EU/μg of protein (determined by LAL method)
<b>Purity</b>	> 95% by SDS-PAGE
<b>Applications</b>	SDS-PAGE, Bioactivity
<b>Storage</b>	Can be stored at +2 to +8 centigrade for 1 week. For long term storage, aliquot and store at -20 to -88 centigrade. Avoid repeated freezing and thawing cycles.
<b>Concentration</b>	0.5 mg/mL (determined by Absorbance at 280nm)
<b>Storage Buffer</b>	Phosphate-Buffered Saline (pH 7.4)

## GENE INFORMATION

<b>Gene Name</b>	<a href="#">IL21 interleukin 21 [ Canis lupus familiaris (dog) ]</a>
<b>Official Symbol</b>	<a href="#">IL21</a>
<b>Synonyms</b>	IL21; interleukin 21; IL-21; interleukin-21
<b>Gene ID</b>	<a href="#">442935</a>
<b>mRNA Refseq</b>	<a href="#">NM_001003347</a>
<b>Protein Refseq</b>	<a href="#">NP_001003347.1</a>

 Tel: 1-631-559-9269 1-516-512-3133

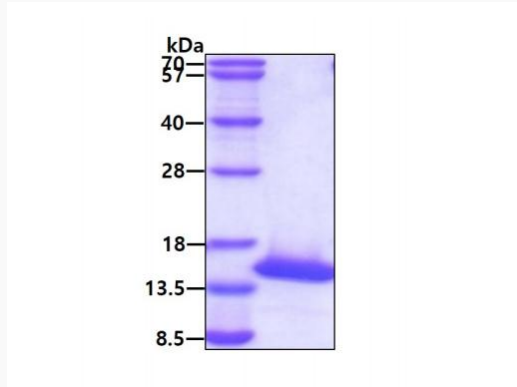
 Email: [info@creative-biomart.com](mailto:info@creative-biomart.com)  Fax: 1-631-938-8127

 45-1 Ramsey Road, Shirley, NY 11967, USA

UniProt ID

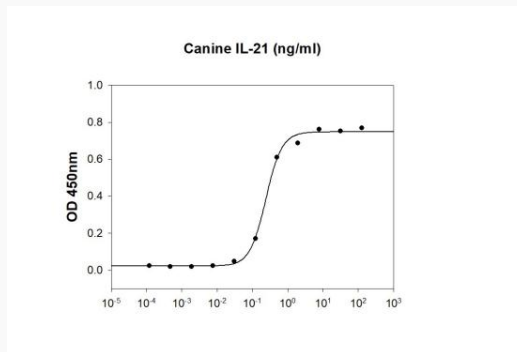
Q6L719

SDS-PAGE




3  $\mu$ g by SDS-PAGE under reducing condition and visualized by coomassie blue stain

Biological Activity



Canine IL-21 stimulates IFN-g secretion of the NK-92 human natural killer cells. The ED50 range  $\leq$  2 ng/mL.

 Tel: 1-631-559-9269 1-516-512-3133

 Email: [info@creative-biomart.com](mailto:info@creative-biomart.com)  Fax: 1-631-938-8127

 45-1 Ramsey Road, Shirley, NY 11967, USA