

Recombinant Human IL21 protein, His-tagged

Cat. No. IL21-15H Lot. No. (See product label)

SPECIFICATION

Product Overview	Recombinant Human IL21 protein, fused with C-terminal His tag, was expressed in HEK293.
Species	Human
Source	HEK293
Form	Lyophilized from a 0.22 µm filtered solution of PBS, pH 7.4.
Bio-activity	1. Measured by its binding ability in a functional ELISA. Immobilized Human IL21R at 2 µg/mL (100 µL/well) can bind Human IL21 with a linear range of 0.078-0.973 µg/mL. 2. Measured by its ability to induce Interferon gamma secretion by human natural killer lymphoma NK-92 cells. The ED50 for this effect is 1.52-6.06 ng/mL, corresponding to a specific activity of 1.65×10 ⁵ ~6.58×10 ⁵ units/mg.
Molecular Mass	16.12 kDa
Endotoxin	< 1.0 EU/µg of the protein by LAL method.
Purity	> 95% by SDS-PAGE.
Storage	Store at -20°C. Store the lyophilized protein at -20°C to -80°C up to 1 year from the date of receipt. After reconstitution, the protein solution is stable at -20°C for 3 months, at 2-8°C for up to 1 week.

 Tel: 1-631-559-9269 1-516-512-3133

 Email: info@creative-biomart.com  Fax: 1-631-938-8127

 45-1 Ramsey Road, Shirley, NY 11967, USA

Reconstitution

Centrifuge the vial before opening. Reconstitute to a concentration of 0.1-0.5 mg/mL in sterile distilled water. Avoid vortex or vigorously pipetting the protein. For long term storage, it is recommended to add a carrier protein or stabilizer (e.g. 0.1% BSA, 5% HSA, 10% FBS or 5% Trehalose), and aliquot the reconstituted protein solution to minimize free-thaw cycles.

GENE INFORMATION

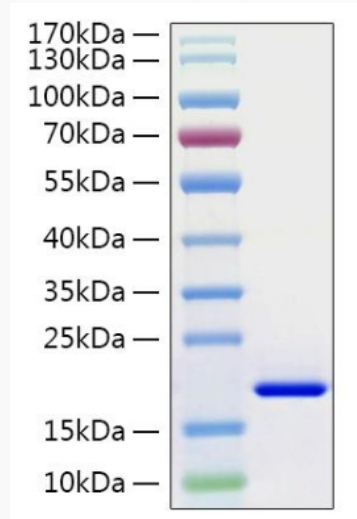
Gene Name	IL21 interleukin 21 [Homo sapiens]
Official Symbol	IL21
Synonyms	IL21; interleukin 21; interleukin-21; IL 21; Za11; interleukin-21 isoform; IL-21;
Gene ID	59067
mRNA Refseq	NM_001207006
Protein Refseq	NP_001193935
MIM	605384
UniProt ID	Q9HBE4

 Tel: 1-631-559-9269 1-516-512-3133

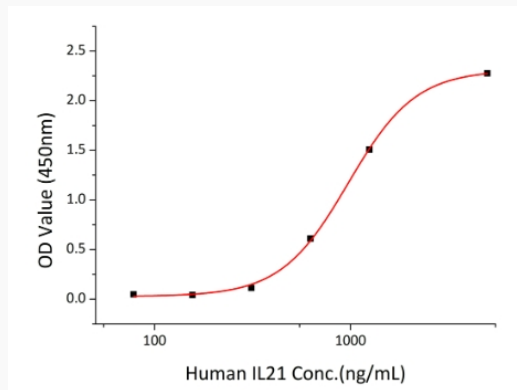
 Email: info@creative-biomart.com  Fax: 1-631-938-8127

 45-1 Ramsey Road, Shirley, NY 11967, USA

SDS-PAGE



Activity



 Tel: 1-631-559-9269 1-516-512-3133

 Email: info@creative-biomart.com  Fax: 1-631-938-8127

 45-1 Ramsey Road, Shirley, NY 11967, USA