

## Recombinant Active Human IL21 Protein, His-tagged(C-ter)

Cat. No. IL21-174H Lot. No. (See product label)

### SPECIFICATION

<b>Product Overview</b>	Recombinant Active Human IL21 Protein with His tag (C-ter) was expressed in E. coli.
<b>Species</b>	Human
<b>Source</b>	E.coli
<b>Description</b>	<p>This gene encodes a member of the common-gamma chain family of cytokines with immunoregulatory activity. The encoded protein plays a role in both the innate and adaptive immune responses by inducing the differentiation, proliferation and activity of multiple target cells including macrophages, natural killer cells, B cells and cytotoxic T cells. Dysregulation of this gene plays a role in multiple immune-mediated diseases including lupus, psoriasis and chronic inflammatory diseases. Alternatively spliced transcript variants encoding multiple isoforms have been observed for this gene. [provided by RefSeq, Dec 2011]</p>
<b>Form</b>	Powder
<b>Bio-activity</b>	Determined by its ability to enhance IFN gamma secretion in NK-92 cells. The ED50 for this effect is < 10 ng/mL.
<b>AA Sequence</b>	<p>MQDRHMIRMQRQLIDIVDQLKKNYVNDLVPEFLPAPEDVETNCEWSAFSCFQKAQLKS  ANTGNNERIINVSIIKLLKRKPPSTNAGRRQKHRLTCPSCDSYEKKPPKEFLERFKSL  QKMIHQHLSSRTHGSEDS</p>
<b>Endotoxin</b>	Endotoxin level is less than 0.1 EU/μg of the protein, as determined by the LAL test.

 Tel: 1-631-559-9269 1-516-512-3133

 Email: [info@creative-biomart.com](mailto:info@creative-biomart.com)  Fax: 1-631-938-8127

 45-1 Ramsey Road, Shirley, NY 11967, USA

<b>Purity</b>	> 95% (by SDS-PAGE)
<b>Applications</b>	SDS-PAGE
<b>Notes</b>	For laboratory research only, not for drug, diagnostic or other use.
<b>Storage</b>	Lyophilized protein should be stored at -20°C. After reconstitution, aliquot and store at -20°C or -80°C for up to one month. Storage in frost free freezers is not recommended. Avoid repeated freeze/thaw cycles. Suggest spin the vial prior to opening.
<b>Storage Buffer</b>	PBS (pH 8.0)
<b>Reconstitution</b>	It is recommended to reconstitute the lyophilized protein in sterile water to a concentration not less than 100 µg/mL and incubate the stock solution for at least 20 min at room temperature to make sure the protein is dissolved completely.

## GENE INFORMATION

<b>Gene Name</b>	IL21 interleukin 21 [ Homo sapiens ]
<b>Official Symbol</b>	IL21
<b>Synonyms</b>	IL21; interleukin 21; interleukin-21; IL 21; Za11; interleukin-21 isoform; IL-21;
<b>Gene ID</b>	59067
<b>mRNA Refseq</b>	NM_001207006
<b>Protein Refseq</b>	NP_001193935

 Tel: 1-631-559-9269 1-516-512-3133

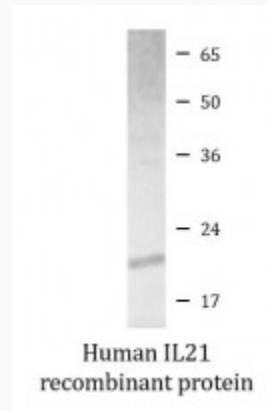
 Email: [info@creative-biomart.com](mailto:info@creative-biomart.com)  Fax: 1-631-938-8127

 45-1 Ramsey Road, Shirley, NY 11967, USA

**MIM** 605384

**UniProt ID** Q9HBE4

**SDS-PAGE**



 Tel: 1-631-559-9269 1-516-512-3133

 Email: [info@creative-biomart.com](mailto:info@creative-biomart.com)  Fax: 1-631-938-8127

 45-1 Ramsey Road, Shirley, NY 11967, USA