

Recombinant Human IL21 Protein, Myc/DDK-tagged, C13 and N15-labeled

Cat. No. IL21-2220H **Lot. No.** (See product label)

SPECIFICATION

Product Overview	IL21 MS Standard C13 and N15-labeled recombinant protein (NP_068575) with a C-terminal MYC/DDK tag, was expressed in HEK293 cells.
Species	Human
Source	HEK293
Description	This gene encodes a member of the common-gamma chain family of cytokines with immunoregulatory activity. The encoded protein plays a role in both the innate and adaptive immune responses by inducing the differentiation, proliferation and activity of multiple target cells including macrophages, natural killer cells, B cells and cytotoxic T cells. Dysregulation of this gene plays a role in multiple immune-mediated diseases including lupus, psoriasis and chronic inflammatory diseases. Alternatively spliced transcript variants encoding multiple isoforms have been observed for this gene.
Molecular Mass	18.5 kDa
AA Sequence	MRSSPGNMERIVICLMVIFLGLTVHKSSSQGQDRHMIRMRLIDIVDQLKKNYVNDLVP EFLPAPEDVETNCEWSAFSCFQKAQLKSANTGNNERIINVSIIKCLKRKPSTNAGR RQKHRLTCPSCDSYEKKPPKEFLERFKSLLQKMIHQHLSSRTHGSEDSTRTRPLEQKL ISEEDLAANDILDYKDDDDKV
Purity	> 80% as determined by SDS-PAGE and Coomassie blue staining

 Tel: 1-631-559-9269 1-516-512-3133

 Email: info@creative-biomart.com  Fax: 1-631-938-8127

 45-1 Ramsey Road, Shirley, NY 11967, USA

Stability	Stable for 3 months from receipt of products under proper storage and handling conditions.
Storage	Store at -80 centigrade. Avoid repeated freeze-thaw cycles.
Concentration	50 µg/mL as determined by BCA
Storage Buffer	100 mM glycine, 25 mM Tris-HCl, pH 7.3.

GENE INFORMATION

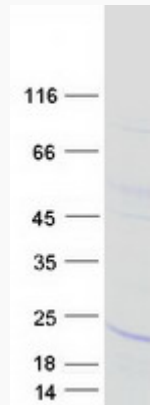
Gene Name	IL21 interleukin 21 [Homo sapiens (human)]
Official Symbol	IL21
Synonyms	IL21; interleukin 21; interleukin-21; IL 21; Za11; interleukin-21 isoform; IL-21;
Gene ID	59067
mRNA Refseq	NM_021803
Protein Refseq	NP_068575
MIM	605384
UniProt ID	Q9HBE4

 Tel: 1-631-559-9269 1-516-512-3133

 Email: info@creative-biomart.com  Fax: 1-631-938-8127

 45-1 Ramsey Road, Shirley, NY 11967, USA

SDS-PAGE



 Tel: 1-631-559-9269 1-516-512-3133

 Email: info@creative-biomart.com  Fax: 1-631-938-8127

 45-1 Ramsey Road, Shirley, NY 11967, USA