

Recombinant Human IL21 Protein (Leu23-Ser162), C-His tagged

Cat. No. IL21-2926H Lot. No. (See product label)

SPECIFICATION

Product Overview	Recombinant human IL21 (Leu23-Ser162) protein fused with the C-His tag was expressed in E. coli.
Species	Human
Source	E.coli
ProteinLength	Leu23-Ser162
Molecular Mass	17.46 kDa
Purity	>90 % as determined by SDS-PAGE.
Notes	For research use only.
Storage	Use a manual defrost freezer and avoid repeated freeze thaw cycles. Store at 2 to 8 centigrade for one week. Store at -20 to -80 centigrade for twelve months from the date of receipt.
Storage Buffer	0.01M PBS, pH 7.4, 0.02 % NLS
Reconstitution	Reconstitute in sterile water for a stock solution.
Shipping	In general, proteins are provided as lyophilized powder/frozen liquid. They are

 Tel: 1-631-559-9269 1-516-512-3133

 Email: info@creative-biomart.com  Fax: 1-631-938-8127

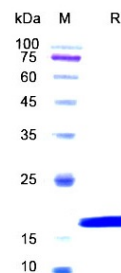
 45-1 Ramsey Road, Shirley, NY 11967, USA

shipped out with dry ice/blue ice unless customers require otherwise.

GENE INFORMATION

Gene Name	IL21 interleukin 21 [Homo sapiens (human)]
Official Symbol	IL21
Synonyms	IL21; interleukin 21; interleukin-21; IL 21; Za11; interleukin-21 isoform; IL-21;
Gene ID	59067
mRNA Refseq	NM_001207006
Protein Refseq	NP_001193935
MIM	605384
UniProt ID	Q9HBE4

SDS-PAGE



 Tel: 1-631-559-9269 1-516-512-3133

 Email: info@creative-biomart.com  Fax: 1-631-938-8127

 45-1 Ramsey Road, Shirley, NY 11967, USA