

Recombinant Human IL21 protein, Fc-tagged

Cat. No. IL21-298H Lot. No. (See product label)

SPECIFICATION

Product Overview Recombinant Human IL21 (Gln23-Ser155) protein was fused to human IgG1 Fc tag at C-terminus and expressed in human 293 cells (HEK293).

Species Human

Source HEK293

ProteinLength Gln23-Ser155

Description

Interleukin-21 (IL-21) is a secreted protein which belongs to the IL-15/IL-21 family. Interleukin-21/IL-21 belongs to a family of cytokines that bind to a composite receptor consisting of a private receptor (IL21R) and the common cytokine receptor gamma chain (gamma(C)). Interleukin-21/IL-21 impacts a number of cell types, including CD8+ memory T cells, NK cells and subsets of CD4 memory T cells. The IL-21R is widely distributed on lympho-haematopoietic cells. IL-21 is a pleiotropic cytokine produced by CD4+ T cells in response to antigenic stimulation. Its action generally enhances antigen-specific responses of immune cells. IL-21 promotes the anti-tumor activity of CD8+ T-cells and NK cells. IL-21 exerts its effect through binding to a specific type I cytokine receptor, IL-21R, which also contains the γ chain (γ c) found in other cytokine receptors including IL-2, IL-4, IL-7, IL-9 and IL-15. The IL-21/IL-21R interaction triggers a cascade of events which includes activation of the tyrosine kinases JAK1 and JAK3, followed by activation of the transcription factors STAT1 and STAT3.

 Tel: 1-631-559-9269 1-516-512-3133

 Email: info@creative-biomart.com  Fax: 1-631-938-8127

 45-1 Ramsey Road, Shirley, NY 11967, USA

Predicted N Terminal	Gln23
Form	Lyophilized from 0.22 µm filtered solution in Tris with Glycine, Arginine and NaCl, pH7.5, 10% trehalose.
Molecular Mass	The protein has a calculated MW of 41.9 kDa. The protein migrates as 45 kDa under reducing (R) condition (SDS-PAGE) due to glycosylation.
Endotoxin	Less than 1.0 EU per µg by the LAL method.
Purity	>95% as determined by SDS-PAGE.
Storage	For long term storage, the product should be stored at lyophilized state at -20 centigrade or lower. Please avoid repeated freeze-thaw cycles. This product is stable after storage at: -20 to -70 centigrade for 12 months in lyophilized state; -70 centigrade for 3 months under sterile conditions after reconstitution.
Reconstitution	It is recommended that sterile water be added to the vial to prepare a stock solution of 0.2 ug/ul. Centrifuge the vial at 4°C before opening to recover the entire contents.

GENE INFORMATION

Gene Name	IL21
Official Symbol	IL21
Synonyms	IL21; interleukin 21; interleukin-21; IL 21; Za11; interleukin-21 isoform; IL-21
Gene ID	59067

 Tel: 1-631-559-9269 1-516-512-3133

 Email: info@creative-biomart.com  Fax: 1-631-938-8127

 45-1 Ramsey Road, Shirley, NY 11967, USA

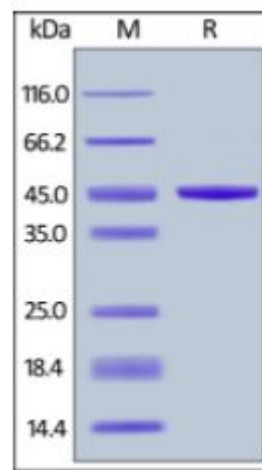
mRNA Refseq [NM_001207006](#)

Protein Refseq [NP_001193935](#)

MIM [605384](#)

UniProt ID [Q9HBE4](#)

**SDS-PAGE of IL21-
298H**



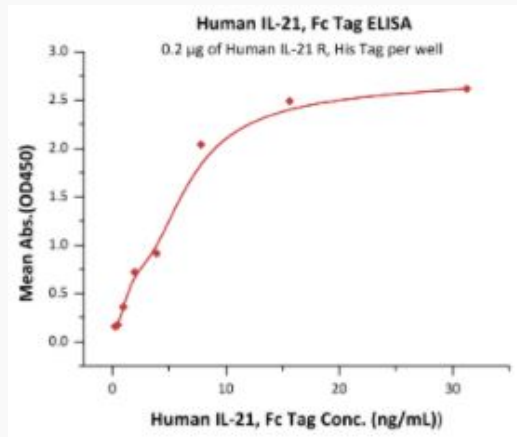
Human IL-21, Fc Tag on SDS-PAGE under reducing (R) condition. The gel was stained overnight with Coomassie Blue. The purity of the protein is greater than 95%.

Tel: 1-631-559-9269 1-516-512-3133

Email: info@creative-biomart.com Fax: 1-631-938-8127

45-1 Ramsey Road, Shirley, NY 11967, USA

**Bioactivity-ELISA of
IL21-298H**



Immobilized Human IL-21 R, His Tag at 2 µg/mL (100 µL/well) can bind Human IL-21, Fc Tag with a linear range of 0.2-8 ng/mL (QC tested).

 Tel: 1-631-559-9269 1-516-512-3133

 Email: info@creative-biomart.com  Fax: 1-631-938-8127

 45-1 Ramsey Road, Shirley, NY 11967, USA