

## Active Recombinant Human IL21 protein

Cat. No. IL21-371H Lot. No. (See product label)

### SPECIFICATION

|                         |  |
|-------------------------|--|
| <b>Product Overview</b> | Active Recombinant Human IL21 protein(Q9HBE4-1) (Gln 23-Ser 155) was expressed and purified in E. coli, with an initial Met.   |
| <b>Species</b>          | Human  |
| <b>Source</b>           | E. coli  |
| <b>ProteinLength</b>    | 23-155 aa  |
| <b>Form</b>             | Lyophilized from sterile 20mM NaAc, 150mM NaCl, pH 5.5.  |
| <b>Bio-activity</b>     | 1. Measured by its ability to bind human IL-21R in a functional ELISA. 2. Measured by its ability to induced Interferon gamma secretion by human natural killer lymphoma NK-92 cells. The ED50 for this effect is typically 0.4-2 ng/ml. |
| <b>Molecular Mass</b>   | The recombinant human IL-21 consisting of 134 amino acids and has a calculated molecular mass of 15.6 kDa. It migrates as an approximately 17 kDa band in SDS-PAGE under reducing conditions.  |
| <b>Purity</b>           | > 92 % as determined by SDS-PAGE   |
| <b>Storage</b>          | Store it under sterile conditions at -20°C to -80°C upon receiving. Recommend to aliquot the protein into smaller quantities for optimal storage. Avoid repeated freeze-thaw cycles.   |

 Tel: 1-631-559-9269 1-516-512-3133

 Email: [info@creative-biomart.com](mailto:info@creative-biomart.com)  Fax: 1-631-938-8127

 45-1 Ramsey Road, Shirley, NY 11967, USA



**Reconstitution** It is recommended that sterile water be added to the vial to prepare a stock solution of 0.2 ug/ul. Centrifuge the vial at 4°C before opening to recover the entire contents.

## GENE INFORMATION

**Gene Name** IL21 interleukin 21 [ Homo sapiens ]

**Official Symbol** IL21

**Synonyms** IL21; interleukin 21; interleukin-21; IL 21; Za11; interleukin-21 isoform; IL-21;

**Gene ID** 59067

**mRNA Refseq** NM\_001207006

**Protein Refseq** NP\_001193935

**MIM** 605384

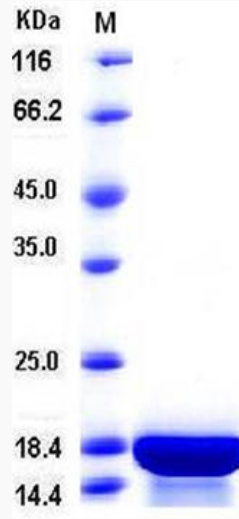
**UniProt ID** Q9HBE4

 Tel: 1-631-559-9269 1-516-512-3133

 Email: [info@creative-biomart.com](mailto:info@creative-biomart.com)  Fax: 1-631-938-8127

 45-1 Ramsey Road, Shirley, NY 11967, USA

SDS-PAGE



 Tel: 1-631-559-9269 1-516-512-3133

 Email: [info@creative-biomart.com](mailto:info@creative-biomart.com)  Fax: 1-631-938-8127

 45-1 Ramsey Road, Shirley, NY 11967, USA