

Active Recombinant Human IL22 Protein, His-tagged

Cat. No. IL22-002H Lot. No. (See product label)

SPECIFICATION

Product Overview Recombinant human IL22 protein(34-179aa), fused to His-tag at C-terminus, was expressed in insect cell and purified by using conventional chromatography techniques.

Species Human

Source Insect Cells

ProteinLength 34-179 a.a.

Description IL22, also known as interleukin-22, is a member of a group of cytokines involved the IL-10 family or IL-10 subfamily. This protein shares us of IL-10R2 in cell signaling with other members of this family, IL-10, IL-26, IL-28A/B and IL-29. It is produced by normal T cells upon anti-CD3 stimulation and initiates innate immune responses against bacterial pathogens especially in epithelial cells such as respiratory and gut epithelial cells. Also, it can be produced by Th17 cells and play a role in the coordinated response of both adaptive and innate immune systems. Biological activity of IL-22 is the functional receptor complex consists of two receptor subunits, IL-22R and IL-10R and is further regulated by interactions with a soluble binding protein, IL-22BP, which shares sequence similarity with an extracellular region of IL-22R1.

Form Liquid

Bio-activity Measured by its ability to induce IL-10 secretion using COLO 205 human colorectal adenocarcinoma cell. The ED50 for this effects is less or equal to 1.2 ng/mL.

 Tel: 1-631-559-9269 1-516-512-3133

 Email: info@creative-biomart.com  Fax: 1-631-938-8127

 45-1 Ramsey Road, Shirley, NY 11967, USA

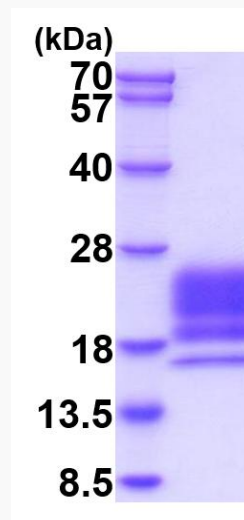
Molecular Mass	17.8 kDa (155aa)
AA Sequence	ADPAPISSHCRLDKSNFQQPYITNRTFMLAKEASLADNNTDVRLIGEKLFHGVSMSE RCYLMKQVLNFTLEEVLPQSDRFQPYMQEVVPFLARLSNRLSTCHIEGDDLHIQRN VQKLKDTVKKLGESGEIKAIGELDLLFMSLRNACIHSHHHHH
N-terminal Sequence Analysis	Ala
Endotoxin	< 0.1 EU per 1µg of protein (determined by LAL method)
Purity	> 90% by SDS-PAGE
Notes	For research use only. This product is not intended or approved for human, diagnostics or veterin.
Storage	Can be stored at +4 centigrade short term (1-2 weeks). For long term storage, aliquot and store at -20 or -70 centigrade. Avoid repeated freezing and thawing cycles.
Concentration	1.0 mg/mL (determined by Absorbance at 280nm)
Storage Buffer	In Phosphate Buffered Saline (pH 7.4) containing 10% glycerol.
GENE INFORMATION	
Gene Name	IL22 interleukin 22 [Homo sapiens (human)]
Official Symbol	IL22
Synonyms	IL22; IL-21; IL-22; IL-D110; IL-TIF; ILTIF; TIFa; TIFIL-23; zcyto18; Interleukin-22;

 Tel: 1-631-559-9269 1-516-512-3133

 Email: info@creative-biomart.com  Fax: 1-631-938-8127

 45-1 Ramsey Road, Shirley, NY 11967, USA

interleukin-22; IL-10-related T-cell-derived inducible factor; cytokine Zcyto18

Gene ID 50616**mRNA Refseq** NM_020525**Protein Refseq** NP_065386**MIM** 605330**UniProt ID** Q9GZX6**SDS-PAGE**

15% SDS-PAGE (3 μ g)
18-28 kDa (SDS-PAGE under reducing conditions)

 Tel: 1-631-559-9269 1-516-512-3133 Email: info@creative-biomart.com  Fax: 1-631-938-8127 45-1 Ramsey Road, Shirley, NY 11967, USA