

Recombinant Human interleukin 22 Protein, His&Flag tagged

Cat. No. IL22-116H Lot. No. (See product label)

SPECIFICATION

Product Overview	Recombinant human IL-22 protein (Q9GZX6) (Ala 34-Ile 179) with both His, Flag tag at the C-terminus was expressed in HEK293.
Species	Human
Source	HEK293
ProteinLength	34-179aa
Description	<p>Interleukin-22 (IL-22), also known as IL-10-related T cell-derived inducible factor (IL-TIF) was initially identified as a gene induced by IL-9 in mouse T cells and mast cells. Human IL-22 cDNA encodes a 179 amino acid (aa) residue protein with a putative 33 aa signal peptide that is cleaved to generate a 147 aa mature protein that shares approximately 79% and 22% aa sequence identity with mouse IL-22 and human IL-10, respectively. The human IL-22 gene is localized to chromosome 12q15. Although it exists as a single copy gene in human and in many mouse strains, the mouse IL-22 gene is duplicated in some mouse strains including C57B1/6, FVB and 129. The two mouse genes designated IL-TIF alpha and IL-TIF beta, share greater than 98% sequence homology in their coding region. IL-22 has been shown to activate STAT-1 and STAT-3 in several hepatoma cell lines and upregulate the production of acute phase proteins. IL-22 is produced by normal T cells upon anti-CD3 stimulation in humans. Mouse IL-22 expression is also induced in various organs upon lipopolysaccharide injection, suggesting that IL-22 may be involved in inflammatory responses. The functional IL-22 receptor complex consists of two</p>

 Tel: 1-631-559-9269 1-516-512-3133

 Email: info@creative-biomart.com  Fax: 1-631-938-8127

 45-1 Ramsey Road, Shirley, NY 11967, USA

receptor subunits, IL-22R (previously an orphan receptor named CRF2-9) and IL-10R beta (previously known as CRF2-4), belonging to the class II cytokine receptor family.

Tag C-His&Flag

Molecular Mass 19.4 kDa

Endotoxin Less than 1.0 EU/μg by the LAL method.

Purity >95% as determined by SDS-PAGE.

Storage Please avoid repeated freeze-thaw cycles. Samples are stable for up to twelve months from date of receipt at -20 to -80 centigrade. It is recommended that aliquot the reconstituted solution to minimize freeze-thaw cycles.

Storage Buffer Lyophilized from a 0.2 μm filtered solution of PBS, pH7.4, 5% Trehalose, 5% mannitol.

Reconstitution Reconstitute at 250 μg/mL in sterile water.

GENE INFORMATION

Gene Name IL22 interleukin 22 [Homo sapiens (human)]

Official Symbol IL22

Synonyms IL22; interleukin 22; interleukin-22; IL 10 related T cell derived inducible factor; IL 21; IL 22; IL D110; IL TIF; ILTIF; MGC79382; MGC79384; TIFa; TIFIL 23; zcyto18; cytokine Zcyto18; IL-10-related T-cell-derived inducible factor; IL-10-related T-cell-derived-inducible factor; IL-21; IL-22; IL-TIF; IL-D110; TIFIL-23;

 Tel: 1-631-559-9269 1-516-512-3133

 Email: info@creative-biomart.com  Fax: 1-631-938-8127

 45-1 Ramsey Road, Shirley, NY 11967, USA

Gene ID 50616

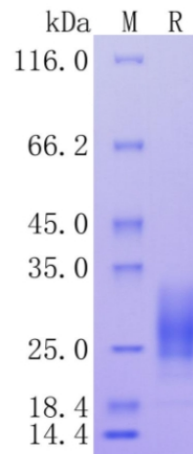
mRNA Refseq NM_020525

Protein Refseq NP_065386

MIM 605330

UniProt ID Q9GZX6

Protein on SDS-PAGE under reducing (R) condition.



Tel: 1-631-559-9269 1-516-512-3133

Email: info@creative-biomart.com Fax: 1-631-938-8127

45-1 Ramsey Road, Shirley, NY 11967, USA