

Recombinant Human IL22 protein

Cat. No. IL22-135H **Lot. No.** (See product label)

SPECIFICATION

Product Overview	Recombinant Human IL22 protein was expressed in Escherichia coli.
Species	Human
Source	E.coli
ProteinLength	147
Description	IL-22 is belonging to IL-10 family of regulatory cytokines which includes IL-10, IL-19, IL-20, IL-22, IL-24 and IL-26. Members of this family share partial homology in their amino acid sequences, but they are dissimilar in their biological functions. Produced by T lymphocytes and dendritic cells, IL-10 contributes to the inflammatory response in vivo. IL-22 signals through CRF2-4 and IL-22. It along with IL-17 is rapidly produced by splenic L _{Ti} -like cells and can be also produced by Th17 cells and likely plays a role in the coordinated response of both adaptive and innate immune systems.
Form	Lyophilized from a 0.2µm filtered concentrated solution in PBS, pH 5.0.
Bio-activity	Fully biologically active when compared to standard. The ED50 as determined by inducing IL-10 secretion of human COLO 205 cells is less than 0.3 ng/ml, corresponding to a specific activity of > 3.3 × 10 ⁶ IU/mg.
Molecular Mass	Approximately 33.6 kDa, non-disulfide-linked homodimeric protein containing of two 147 amino acid polypeptide chains.

 Tel: 1-631-559-9269 1-516-512-3133

 Email: info@creative-biomart.com  Fax: 1-631-938-8127

 45-1 Ramsey Road, Shirley, NY 11967, USA

AA Sequence	<p>MAPISSHCRLDKSNFQQPYITNRTFMLAKEASLADNNTDVRLIGEKLFHGVSMSERC YLMKQVLNFTLEEVLFPQSDRFQPYMQEVVPFLARLSNRLSTCHIEGDDLHIQRNVQ KLKDTVKKLGESGEIKAIGELDLLFMSLRNACI</p>
Endotoxin	<p>Less than 1 EU/g of rHuIL-22 as determined by LAL method.</p>
Purity	<p>>97% by SDS-PAGE and HPLC analysis.</p>
Storage	<p>Use a manual defrost freezer and avoid repeated freeze-thaw cycles. 12 months from date of receipt, -20 to -70 centigrade as supplied. 1 month, 2 to 8 centigrade under sterile conditions after reconstitution. 3 months, -20 to -70 centigrade under sterile conditions after reconstitution.</p>
Reconstitution	<p>We recommend that this vial be briefly centrifuged prior to opening to bring the contents to the bottom. Reconstitute in sterile distilled water or aqueous buffer containing 0.1 % BSA to a concentration of 0.1-1.0 mg/mL. Stock solutions should be apportioned into working aliquots and stored at ≤-20 centigrade. Further dilutions should be made in appropriate buffered solutions.</p>
GENE INFORMATION	
Gene Name	<p>IL22</p>
Official Symbol	<p>IL22</p>
Synonyms	<p>IL22; interleukin 22; interleukin-22; IL 10 related T cell derived inducible factor; IL 21; IL 22; IL D110; IL TIF; ILTIF; MGC79382; MGC79384; TIFa; TIFIL 23; zcyto18; cytokine Zcyto18; IL-10-related T-cell-derived inducible factor; IL-10-related T-cell-derived-inducible factor; IL-21; IL-22; IL-TIF; IL-D110; TIFIL-23;</p>
Gene ID	<p>50616</p>

 Tel: 1-631-559-9269 1-516-512-3133

 Email: info@creative-biomart.com  Fax: 1-631-938-8127

 45-1 Ramsey Road, Shirley, NY 11967, USA

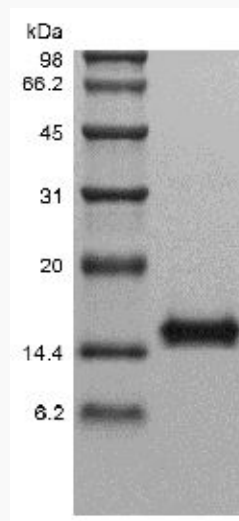
mRNA Refseq [NM_020525](#)

Protein Refseq [NP_065386](#)

MIM [605330](#)

UniProt ID [Q9GZX6](#)

**SDS-PAGE of IL22-
135H**



 Tel: 1-631-559-9269 1-516-512-3133

 Email: info@creative-biomart.com  Fax: 1-631-938-8127

 45-1 Ramsey Road, Shirley, NY 11967, USA