

## Recombinant Human IL22 protein, His-tagged

Cat. No. IL22-15H Lot. No. (See product label)

### SPECIFICATION

<b>Product Overview</b>	Recombinant Human IL22 protein(Q9GZX6)(Ala34-Ile179), fused with N-terminal His tag, was expressed in HEK293.
<b>Species</b>	Human
<b>Source</b>	HEK293
<b>ProteinLength</b>	Ala34-Ile179
<b>Tag</b>	N-His
<b>Form</b>	Lyophilized from 0.22µm filtered solution in PBS (pH 7.4). Normally 5% trehalose is added as protectant before lyophilization.
<b>Bio-activity</b>	Immobilized Human IL-22, His Tag at 2µg/ml (100µl/Well) on the plate. Dose response curve for Human IL-22R alpha 1, hFc Tag with the EC50 of 10.6ng/ml determined by ELISA.
<b>Molecular Mass</b>	The protein has a predicted MW of 17.8 kDa. Due to glycosylation, the protein migrates to 28-40 kDa based on Tris-Bis PAGE result.
<b>Endotoxin</b>	Less than 1EU per µg by the LAL method.
<b>Purity</b>	> 95% as determined by Tris-Bis PAGE; > 95% as determined by HPLC

 Tel: 1-631-559-9269 1-516-512-3133

 Email: [info@creative-biomart.com](mailto:info@creative-biomart.com)  Fax: 1-631-938-8127

 45-1 Ramsey Road, Shirley, NY 11967, USA

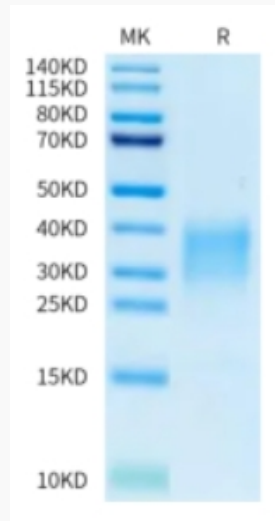
<b>Storage</b>	Reconstituted protein stable at -80°C for 12 months, 4°C for 1 week. Use a manual defrost freezer and avoid repeated freeze-thaw cycles.
<b>Reconstitution</b>	Centrifuge tubes before opening. Reconstituting to a concentration more than 100 µg/ml is recommended. Dissolve the lyophilized protein in distilled water.
<b>GENE INFORMATION</b>	
<b>Gene Name</b>	<a href="#">IL22 interleukin 22 [ Homo sapiens ]</a>
<b>Official Symbol</b>	<a href="#">IL22</a>
<b>Synonyms</b>	IL22; interleukin 22; interleukin-22; IL 10 related T cell derived inducible factor; IL 21; IL 22; IL D110; IL TIF; ILTIF; MGC79382; MGC79384; TIFa; TIFIL 23; zcyto18; cytokine Zcyto18; IL-10-related T-cell-derived inducible factor; IL-10-related T-cell-derived-inducible factor; IL-21; IL-22; IL-TIF; IL-D110; TIFIL-23;
<b>Gene ID</b>	<a href="#">50616</a>
<b>mRNA Refseq</b>	<a href="#">NM_020525</a>
<b>Protein Refseq</b>	<a href="#">NP_065386</a>
<b>MIM</b>	<a href="#">605330</a>
<b>UniProt ID</b>	<a href="#">Q9GZX6</a>

 Tel: 1-631-559-9269 1-516-512-3133

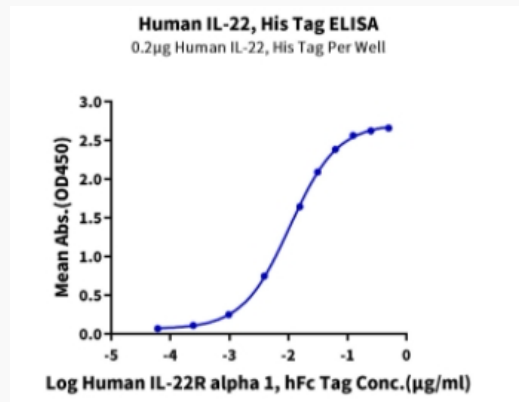
 Email: [info@creative-biomart.com](mailto:info@creative-biomart.com)  Fax: 1-631-938-8127

 45-1 Ramsey Road, Shirley, NY 11967, USA

**Tris-Bis PAGE**



**ELISA Data**



 Tel: 1-631-559-9269 1-516-512-3133

 Email: [info@creative-biomart.com](mailto:info@creative-biomart.com)  Fax: 1-631-938-8127

 45-1 Ramsey Road, Shirley, NY 11967, USA