

Recombinant Active Human IL22 Protein, His-tagged(C-ter)

Cat. No. IL22-177H Lot. No. (See product label)

SPECIFICATION

Product Overview	Recombinant Active Human IL22 Protein with His tag (C-ter) was expressed in E. coli.
Species	Human
Source	E.coli
Description	This gene is a member of the IL10 family of cytokines that mediate cellular inflammatory responses. The encoded protein functions in antimicrobial defense at mucosal surfaces and in tissue repair. This protein also has pro-inflammatory properties and plays a role in the pathogenesis of several intestinal diseases. The encoded protein is a crucial cytokine that regulates host immunity in infectious diseases, including COVID-19 (disease caused by SARS-CoV-2).
Form	Powder
Bio-activity	Determined by its ability to induce proliferation in A549 cells. The ED50 for this effect is < 0.5 ng/mL.
AA Sequence	MAPISSHCRLDKSNFQQPYITNRTFMLAKEASLADNNTDVRLLIGEKLFHGVSMSERC YLMKQVLNFTLEEVLPQSDRFQPYMQEVVPFLARLSNRLSTCHIEGDDLHIQRNVQ KLKDTVKKLGESGEIKAIGELDLLFMSLRNACI
Endotoxin	Endotoxin level is less than 0.1 EU/μg of the protein, as determined by the LAL test.
Purity	> 98% (by SDS-PAGE)

 Tel: 1-631-559-9269 1-516-512-3133

 Email: info@creative-biomart.com  Fax: 1-631-938-8127

 45-1 Ramsey Road, Shirley, NY 11967, USA

Applications	SDS-PAGE
Notes	For laboratory research only, not for drug, diagnostic or other use.
Storage	Lyophilized protein should be stored at -20°C. After reconstitution, aliquot and store at -20°C or -80°C for up to one month. Storage in frost free freezers is not recommended. Avoid repeated freeze/thaw cycles. Suggest spin the vial prior to opening.
Storage Buffer	PBS (pH 8.0)
Reconstitution	It is recommended to reconstitute the lyophilized protein in sterile water to a concentration not less than 100 µg/mL and incubate the stock solution for at least 20 min at room temperature to make sure the protein is dissolved completely.

GENE INFORMATION

Gene Name	IL22 interleukin 22 [Homo sapiens]
Official Symbol	IL22
Synonyms	IL22; interleukin 22; interleukin-22; IL 10 related T cell derived inducible factor; IL 21; IL 22; IL D110; IL TIF; ILTIF; MGC79382; MGC79384; TIFa; TIFIL 23; zcyto18; cytokine Zcyto18; IL-10-related T-cell-derived inducible factor; IL-10-related T-cell-derived-inducible factor; IL-21; IL-22; IL-TIF; IL-D110; TIFIL-23;
Gene ID	50616
mRNA Refseq	NM_020525
Protein Refseq	NP_065386

 Tel: 1-631-559-9269 1-516-512-3133

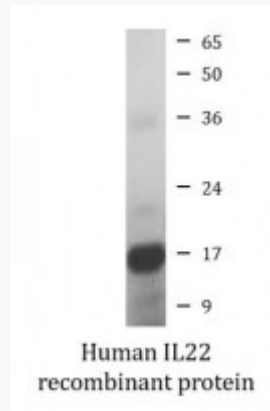
 Email: info@creative-biomart.com  Fax: 1-631-938-8127

 45-1 Ramsey Road, Shirley, NY 11967, USA

MIM 605330

UniProt ID Q9GZX6

SDS-PAGE



 Tel: 1-631-559-9269 1-516-512-3133

 Email: info@creative-biomart.com  Fax: 1-631-938-8127

 45-1 Ramsey Road, Shirley, NY 11967, USA