

Active Recombinant Human IL22 Protein (Ala34-Ile179), C-His tagged, Animal-free, Carrier-free

Cat. No. IL22-241H Lot. No. (See product label)

SPECIFICATION

Product Overview	Recombinant Human IL22 Protein (Ala34-Ile179) with C-His tag was expressed in E. coli and Animal-free as well as Carrier-free.
Species	Human
Source	E.coli
ProteinLength	Ala34-Ile179
Description	Interleukin 22(IL-22) is an α -helical cytokine, predicts a molecular mass of 16.9 kDa. It is produced by T-helper (Th)-17 cells, $\gamma\delta$ T cells, NKT cells and newly described innate lymphoid cells (ILCs). Effects involve stimulation of cell survival, proliferation and synthesis of antimicrobials including S120, Reg3 β , Reg3 γ and defensins.
Form	Lyophilized
Bio-activity	Measure by its ability to induce proliferation in A549 cells. The ED50 for this effect is < 0.5 ng/mL.
Molecular Mass	The protein has a calculated MW of 17.83 kDa. The protein migrates as 17 kDa under reducing condition (SDS-PAGE analysis).
Endotoxin	< 0.1 EU/ μ g of the protein by the LAL method.

 Tel: 1-631-559-9269 1-516-512-3133

 Email: info@creative-biomart.com  Fax: 1-631-938-8127

 45-1 Ramsey Road, Shirley, NY 11967, USA

Purity	>98% as determined by SDS-PAGE analysis.
Storage	This product is stable after storage at: -20 centigrade for 12 months in lyophilized state from date of receipt. -20 or -80 centigrade for 1 month under sterile conditions after reconstitution. Avoid repeated freeze/thaw cycles.
Storage Buffer	Lyophilized from a 0.2 µm filtered solution of PBS, pH 8.0.
Reconstitution	It is recommended to reconstitute the lyophilized protein in sterile H2O to a concentration not less than 200 µg/mL and incubate the stock solution for at least 20 min to ensure sufficient re-dissolved.
Shipping	The product is shipped with polar packs. Upon receipt, store it immediately at -20 centigrade or lower for long term storage.

GENE INFORMATION

Gene Name	IL22 interleukin 22 [Homo sapiens (human)]
Official Symbol	IL22
Synonyms	IL22; interleukin 22; interleukin-22; IL 10 related T cell derived inducible factor; IL 21; IL 22; IL D110; IL TIF; ILTIF; MGC79382; MGC79384; TIFa; TIFIL 23; zcyto18; cytokine Zcyto18; IL-10-related T-cell-derived inducible factor; IL-10-related T-cell-derived-inducible factor; IL-21; IL-22; IL-TIF; IL-D110; TIFIL-23;
Gene ID	50616
mRNA Refseq	NM_020525

 Tel: 1-631-559-9269 1-516-512-3133

 Email: info@creative-biomart.com  Fax: 1-631-938-8127

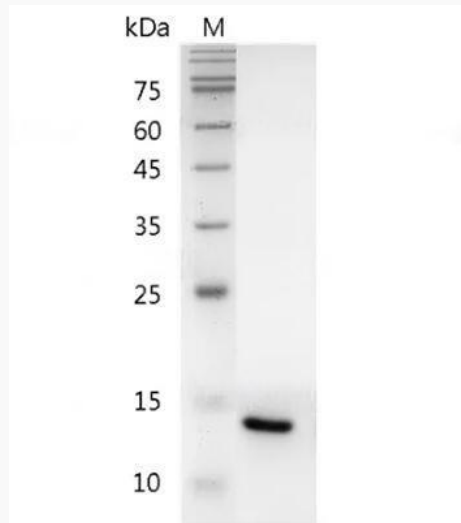
 45-1 Ramsey Road, Shirley, NY 11967, USA

Protein Refseq NP_065386

MIM 605330

UniProt ID Q9GZX6

**SDS-PAGE analysis
of recombinant
human IL-22.**



 Tel: 1-631-559-9269 1-516-512-3133

 Email: info@creative-biomart.com  Fax: 1-631-938-8127

 45-1 Ramsey Road, Shirley, NY 11967, USA