

Active GMP Recombinant Human IL22 protein

Cat. No. IL22-4335HG Lot. No. (See product label)

SPECIFICATION

Product Overview	Recombinant Human IL22 was produced in E. coli using non-animal reagents in an animal-free facility under cGMP guidelines.
Species	Human
Source	E.coli
Description	IL-22 is belonging to IL-10 family of regulatory cytokines which includes IL-10, IL-19, IL-20, IL-22, IL-24 and IL-26. Members of this family share partial homology in their amino acid sequences, but they are dissimilar in their biological functions. Produced by T lymphocytes and dendritic cells, IL-10 contributes to the inflammatory response in vivo. IL-22 signals through CRF2-4 and IL-22. It along with IL-17 is rapidly produced by splenic LTi-like cells and can be also produced by Th17 cells and likely plays a role in the coordinated response of both adaptive and innate immune systems.
Form	Lyophilized from a 0.2 µ filtered concentrated solution in PBS, pH 5.0.
Bio-activity	Fully biologically active when compared to standard. The ED50 as determined by inducing IL-10 secretion of human COLO 205 cells is less than 0.3 ng/ml, corresponding to a specific activity of $> 3.3 \times 10^6$ IU/mg.
Molecular Mass	Approximately 33.6 kDa, non-disulfide-linked homodimeric protein containing of two 147 amino acid polypeptide chains.

 Tel: 1-631-559-9269 1-516-512-3133

 Email: info@creative-biomart.com  Fax: 1-631-938-8127

 45-1 Ramsey Road, Shirley, NY 11967, USA

AA Sequence	<p>MAPISSHCRLDKSNFQQPYITNRTFMLAKEASLADNNTDVRLIGEKLFHGVSM SERC YLMKQVLNFTLEEVLPQSDRFQPYMQEVV PFLARLSNRLSTCHIEGDDLHIQRNVQ KLKDTVKKLGESGEIKAIGELDLLFMSLRNACI</p>
Endotoxin	Less than 1 EU/g of rHuIL-22 as determined by LAL method.
Purity	> 97 % by SDS-PAGE and HPLC analyses.
Storage	This lyophilized preparation is stable at 2-8 centigrade, but should be kept at -20 centigrade for long term storage, preferably desiccated. Upon reconstitution, the preparation is stable for up to one week at 2-8 centigrade. For maximal stability, apportion the reconstituted preparation into working aliquots and store at -20 centigrade to -70 centigrade. Avoid repeated freeze/thaw cycles.
Reconstitution	Reconstitute in sterile distilled water or aqueous buffer containing 0.1 % BSA to a concentration of 0.1-1.0 mg/mL. Stock solutions should be apportioned into working aliquots and stored at ≤ -20 centigrade. Further dilutions should be made in appropriate buffered solutions.
Quality Statement	Our GMP proteins are produced according to relevant sections of the following documents: WHO TRS, No. 822, 1992 Annex 1, Good Manufacturing Practices for Biological Products; USP Chapter 1043, Ancillary Materials for Cell, Gene and Tissue-Engineered Products and USP Chapter 92, Growth Factors and Cytokines Used in Cell Therapy Manufacturing.
Shipping	The product is shipped at ambient temperature. Upon receipt, store it immediately at the recommended temperature.

GENE INFORMATION

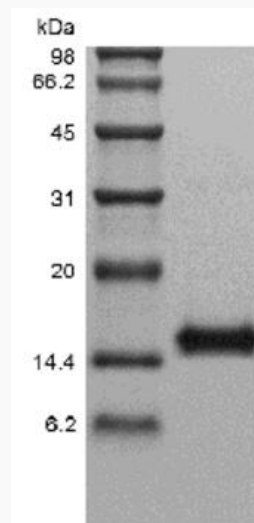
Gene Name [IL22 interleukin 22 \[Homo sapiens \]](#)

 Tel: 1-631-559-9269 1-516-512-3133

 Email: info@creative-biomart.com  Fax: 1-631-938-8127

 45-1 Ramsey Road, Shirley, NY 11967, USA

Official Symbol	IL22
Synonyms	IL22; interleukin 22; interleukin-22; IL 10 related T cell derived inducible factor; IL 21; IL 22; IL D110; IL TIF; ILTIF; MGC79382; MGC79384; TIFa; TIFIL 23; zcyto18; cytokine Zcyto18; IL-10-related T-cell-derived inducible factor; IL-10-related T-cell-derived-inducible factor; IL-21; IL-22; IL-TIF; IL-D110; TIFIL-23;
Gene ID	50616
mRNA Refseq	NM_020525
Protein Refseq	NP_065386
MIM	605330
UniProt ID	Q9GZX6



 Tel: 1-631-559-9269 1-516-512-3133

 Email: info@creative-biomart.com  Fax: 1-631-938-8127

 45-1 Ramsey Road, Shirley, NY 11967, USA