

Recombinant Human IL22 Protein, Myc/DDK-tagged, C13 and N15-labeled

Cat. No. IL22-5005H **Lot. No.** (See product label)

SPECIFICATION

Product Overview	IL22 MS Standard C13 and N15-labeled recombinant protein (NP_065386) with a C-terminal MYC/DDK tag, was expressed in HEK293 cells.
Species	Human
Source	HEK293
Description	This gene is a member of the IL10 family of cytokines that mediate cellular inflammatory responses. The encoded protein functions in antimicrobial defense at mucosal surfaces and in tissue repair. This protein also has pro-inflammatory properties and plays a role in the pathogenesis of several intestinal diseases.
Molecular Mass	20 kDa
AA Sequence	MAALQKSVSSFLMGTLATSCLLLLALLVQGGAAAPISSHCRLDKSNFQQPYITNRTF MLAKEASLADNNTDVRDIGEKLFHGVSMSERCYLMKQVLNFTLEEVLPQSDRFQP YMQEVPFLARLSNRLSTCHIEGDDLHIQRNVQKLKDTVKKLGESGEIKAIGELDLLF MSLRNACITRTRPLEQKLISEEDLAANDILDYKDDDDKV
Purity	> 80% as determined by SDS-PAGE and Coomassie blue staining
Stability	Stable for 3 months from receipt of products under proper storage and handling conditions.

 Tel: 1-631-559-9269 1-516-512-3133

 Email: info@creative-biomart.com  Fax: 1-631-938-8127

 45-1 Ramsey Road, Shirley, NY 11967, USA

Storage	Store at -80 centigrade. Avoid repeated freeze-thaw cycles.
Concentration	50 µg/mL as determined by BCA
Storage Buffer	100 mM glycine, 25 mM Tris-HCl, pH 7.3.
GENE INFORMATION	
Gene Name	IL22 interleukin 22 [Homo sapiens (human)]
Official Symbol	IL22
Synonyms	IL22; interleukin 22; interleukin-22; IL 10 related T cell derived inducible factor; IL 21; IL 22; IL D110; IL TIF; ILTIF; MGC79382; MGC79384; TIFa; TIFIL 23; zcyto18; cytokine Zcyto18; IL-10-related T-cell-derived inducible factor; IL-10-related T-cell-derived-inducible factor; IL-21; IL-22; IL-TIF; IL-D110; TIFIL-23;
Gene ID	50616
mRNA Refseq	NM_020525
Protein Refseq	NP_065386
MIM	605330
UniProt ID	Q9GZX6

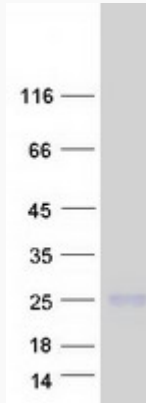
 Tel: 1-631-559-9269 1-516-512-3133

 Email: info@creative-biomart.com  Fax: 1-631-938-8127

 45-1 Ramsey Road, Shirley, NY 11967, USA



SDS-PAGE



Tel: 1-631-559-9269 1-516-512-3133

Email: info@creative-biomart.com Fax: 1-631-938-8127

45-1 Ramsey Road, Shirley, NY 11967, USA