

Recombinant Zebrafish IL22 Protein, His-tagged

Cat. No. IL22-60Z Lot. No. (See product label)

SPECIFICATION

Product Overview	Recombinant Zebrafish IL22 Protein, fused to His-tag, was expressed in E. coli.
Species	Zebrafish
Source	E.coli
Description	Acts upstream of or within defense response to Gram-negative bacterium; immune response; and regulation of inflammatory response. Is expressed in several structures, including caudal fin; gill; heart; liver; and pleuroperitoneal region. Orthologous to human IL22 (interleukin 22).
Form	Supplied as a 0.2 µm filtered solution in PBS, 1 mM DTT (pH8.0).
Molecular Mass	~25 kDa
AA Sequence	MHHHHHHMGDYAKGEKTTTVTYRHDIKAPEPQDALQVSTSRNNGVHKRTDTRIHSS TCDMKCFTLIALLCSCFLSGCARPTPLDSSATWNDLAAMTDTARNEDDHETRLLPYF SHDMLQEEGSCCINARILKYYVNHVLESDEHTDMKYPMIRNVREGLHRVEQELQNH CKHDYSSHPLVKQFKRNYHASAIMDLAAARNKAIGETNTLYHYLFESCTPK
Purity	>90%
Storage	Store it under sterile conditions at -20 to -80 centigrade. It is recommended that the protein be aliquoted for optimal storage. Avoid repeated freeze-thaw cycles.

 Tel: 1-631-559-9269 1-516-512-3133

 Email: info@creative-biomart.com  Fax: 1-631-938-8127

 45-1 Ramsey Road, Shirley, NY 11967, USA

Concentration 0.13 mg/ml

GENE INFORMATION

Gene Name [il22 interleukin 22 \[Danio rerio \(zebrafish\) \]](#)

Official Symbol [IL22](#)

Synonyms TIFa; IL-21; IL-22; ILTIF; IL-TIF; IL-D110; zcyto18; TIFIL-23

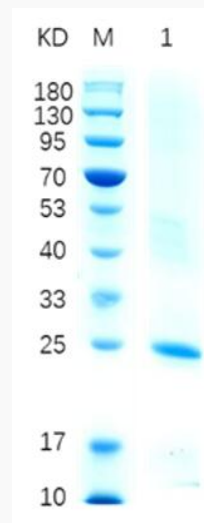
Gene ID [553964](#)

mRNA Refseq [NM_001020792](#)

Protein Refseq [NP_001018628](#)

UniProt ID [Q5TLE4](#)

SDS-PAGE



 Tel: 1-631-559-9269 1-516-512-3133

 Email: info@creative-biomart.com  Fax: 1-631-938-8127

 45-1 Ramsey Road, Shirley, NY 11967, USA



12% reducing SDS-PAGE analysis of purified IL22 (approximately 2 mg protein loaded).

 Tel: 1-631-559-9269 1-516-512-3133

 Email: info@creative-biomart.com  Fax: 1-631-938-8127

 45-1 Ramsey Road, Shirley, NY 11967, USA