

Recombinant Human IL22 Protein, hlgG2 Fc-tagged

Cat. No. IL22-83H Lot. No. (See product label)

SPECIFICATION

Product Overview	Recombinant Human Interleukin-22 is produced by our Mammalian expression system and the target gene encoding Ala34-Ile179 is expressed with a hlgG2 Fc tag at the C-terminus.
-------------------------	---

Species	Human
----------------	-------

Source	Human Cells
---------------	-------------

ProteinLength	Ala34-Ile179
----------------------	--------------

Description	<p>Interleukin-22(IL-22) is a member of a group of the IL-10 family, a class of potent mediators of cellular inflammatory responses. IL-22 is produced by activated DC and T cells. IL-22 and IL-10 receptor chains play a role in cellular targeting and signal transduction. It can initiate and regulate innate immune responses against bacterial pathogens especially in epithelial cells such as respiratory and gut epithelial cells. IL-22 along with IL-17 likely plays a role in the coordinated response of both adaptive and innate immune systems. IL-22 also promotes hepatocyte survival in the liver and epithelial cells in the lung and gut similar to IL-10. Biological activity of IL-22 is initiated by binding to a cell-surface complex consisting of IL-22R1 and IL-10R2 receptor chains. IL-22 biological activity is further regulated by interactions with a soluble binding protein, IL-22BP. IL-22BP and an extracellular region of IL-22R1 share sequence similarity. In some cases, the pro-inflammatory versus tissue-protective functions of IL-22 are regulated by cytokine IL-17A.</p>
--------------------	---

 Tel: 1-631-559-9269 1-516-512-3133

 Email: info@creative-biomart.com  Fax: 1-631-938-8127

 45-1 Ramsey Road, Shirley, NY 11967, USA

Form	Lyophilized from a 0.2 um filtered solution of PBS, pH7.4.
AA Sequence	<p>APISSHCRLDKSNFQQPYITNRTFMLAKEASLADNNTDVRDIGEKLFHGVSMSERCY LMKQVLNFTLEE VLFPQSDRFQPYMQEVVPFLARLSNRLSTCHIEGDDLHIQRNVQ KLKDTVKKLGESGEIKAIGELDLLFM SLRNACIGGGGSGGGGSGGGGSEKCCVEC PPCPAPPVAGPSVFLFPPKPKDTLMISRTPEVTCVVV DVSHEDPEVQFNWYVDGM EVHNAKTKPREEQFNSTFRVSVLTVVHQDWLNGKEYKCKVSNKGLPA PIEKTISK TKGQPREPQVYTLPPSREEMTKNQVSLTCLVKGFYPSDIAVEWESNGQPENNYKTT PPMLD SDGSFFLYSKLTVDKSRWQQGNVFCFSVMHEALHNHYTQKSLSLSPGK</p>
Endotoxin	Less than 0.1 ng/ug (1 EU/ug).
Purity	>95%
Storage	<p>Lyophilized protein should be stored at < -20 centigrade, though stable at room temperature for 3 weeks.</p> <p>Reconstituted protein solution can be stored at 4-7 centigrade for 2-7 days.</p> <p>Aliquots of reconstituted samples are stable at < -20 centigrade for 3 months.</p>
Quality Statement	Purity: Greater than 95% as determined by reducing SDS-PAGE.
Shipping	<p>The product is shipped at ambient temperature.</p> <p>Upon receipt, store it immediately at the temperature listed below.</p>

GENE INFORMATION

Gene Name	IL22 interleukin 22 [Homo sapiens (human)]
Official Symbol	IL22
Synonyms	Interleukin-22; IL-22; Cytokine Zcyto18; IL-10-related T-cell-derived-inducible factor;

 Tel: 1-631-559-9269 1-516-512-3133

 Email: info@creative-biomart.com  Fax: 1-631-938-8127

 45-1 Ramsey Road, Shirley, NY 11967, USA

IL-TIF; TIFa; IL-21; IL-22; ILTIF; IL-D110; zcyto18; TIFIL-23

Gene ID 50616

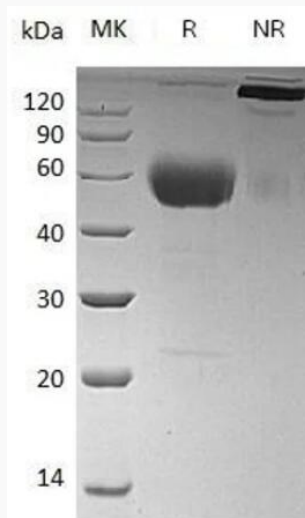
mRNA Refseq NM_020525.5

Protein Refseq NP_065386.1

MIM 605330

UniProt ID Q9GZX6

SDS-PAGE



 Tel: 1-631-559-9269 1-516-512-3133

 Email: info@creative-biomart.com  Fax: 1-631-938-8127

 45-1 Ramsey Road, Shirley, NY 11967, USA