

## Recombinant Human IL22RA1 protein, His-Avi-tagged

Cat. No. IL22RA1-120H Lot. No. (See product label)

### SPECIFICATION

<b>Product Overview</b>	Recombinant Human IL-22R alpha 1 Protein is expressed from mammalian with a His and Avi tag at the C-terminal. It contains Ala16-Thr228.
<b>Species</b>	Human
<b>Source</b>	HEK293
<b>ProteinLength</b>	It contains Ala16-Thr228.
<b>Description</b>	IL-22 receptor, also known as IL-22 R alpha 1 and CRF2-9, is an approximately 65 kDa transmembrane glycoprotein in the type II cytokine receptor family (CRF).Component of the receptor for IL20, IL22 and IL24. Component of IL22 receptor formed by IL22RA1 and IL10RB enabling IL22 signaling via JAK/STAT pathways. IL22 also induces activation of MAPK1/MAPK3 and Akt kinases pathways. Component of one of the receptor for IL20 and IL24 formed by IL22RA1 and IL20RB also signaling through STATs activation. Mediates IL24 antiangiogenic activity as well as IL24 inhibitory effect on endothelial cell tube formation and differentiation.
<b>Form</b>	Supplied as 0.22um filtered solution in PBS (pH 7.4).
<b>Molecular Mass</b>	The protein has a predicted MW of 27.3 kDa.Due to glycosylation, the protein migrates to 38-45KDa based on Bis-Tris PAGE result.
<b>Endotoxin</b>	Less than 1EU per ug by the LAL method.

 Tel: 1-631-559-9269 1-516-512-3133

 Email: [info@creative-biomart.com](mailto:info@creative-biomart.com)  Fax: 1-631-938-8127

 45-1 Ramsey Road, Shirley, NY 11967, USA

<b>Purity</b>	> 95% as determined by Tris-Bis PAGE
<b>Storage</b>	The product should be stored at -70°C. Please do not repeated freeze-thaw cycles.
<b>Reconstitution</b>	It is recommended that sterile water be added to the vial to prepare a stock solution of 0.2 ug/ul. Centrifuge the vial at 4°C before opening to recover the entire contents.

## GENE INFORMATION

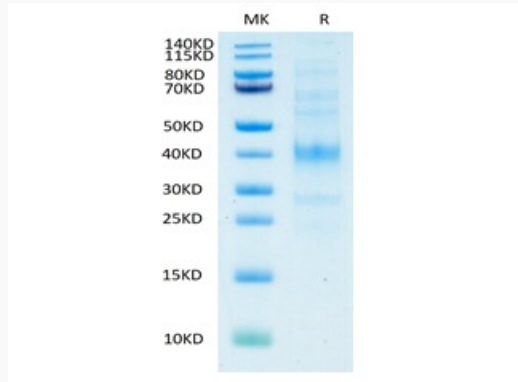
<b>Gene Name</b>	IL22RA1 interleukin 22 receptor, alpha 1 [ Homo sapiens ]
<b>Official Symbol</b>	IL22RA1
<b>Synonyms</b>	CRF2-9; CRF2-9interleukin 22 receptor; Cytokine receptor class-II member 9; Cytokine receptor family 2 member 9; IL-22 R alpha 1; IL-22 receptor subunit alpha-1; IL22R alpha 1; IL22R; IL22R1; IL22RA1; IL-22Ra1; IL-22R-alpha-1; IL-TIF-R1; interleukin 22 receptor, alpha 1; interleukin-22 receptor subunit alpha-1; zcytoR11
<b>Gene ID</b>	58985
<b>mRNA Refseq</b>	NM_021258
<b>Protein Refseq</b>	NP_067081
<b>MIM</b>	605457
<b>UniProt ID</b>	Q8N6P7

 Tel: 1-631-559-9269 1-516-512-3133

 Email: [info@creative-biomart.com](mailto:info@creative-biomart.com)  Fax: 1-631-938-8127

 45-1 Ramsey Road, Shirley, NY 11967, USA

**Tris-Bis PAGE**



 Tel: 1-631-559-9269 1-516-512-3133

 Email: [info@creative-biomart.com](mailto:info@creative-biomart.com)  Fax: 1-631-938-8127

 45-1 Ramsey Road, Shirley, NY 11967, USA