

Active Recombinant Human IL22RA1 protein, His-tagged

Cat. No. IL22RA1-121H Lot. No. (See product label)

SPECIFICATION

| | |
|-------------------------|---|
| Product Overview | Active Recombinant Human IL22RA1 protein(Q8N6P7)(His16-Thr228) is expressed from HEK293 with His tag at the C-terminus. |
| Species | Human |
| Source | HEK293 |
| ProteinLength | 16-228 aa |
| Form | Lyophilized from 0.22 µm filtered solution in PBS (pH 7.4). |
| Bio-activity | Immobilized Human IL-22R alpha 1, His Tag at 0.5µg/ml (100µl/well) on the plate. Dose response curve for Anti-IL-22R alpha 1 Antibody, hFc Tag with the EC50 of 6.4ng/ml determined by ELISA. |
| Molecular Mass | The protein has a predicted MW of 25.67 kDa. Due to glycosylation, the protein migrates to 35-45 kDa based on Bis-Tris PAGE result. |
| Endotoxin | Less than 1 EU per µg by the LAL method. |
| Purity | > 95% as determined by Bis-Tris PAGE > 95% as determined by HPLC |
| Storage | Samples are stable for up to twelve months from date of receipt at -20°C to -80°C. Store it under sterile conditions at -20°C to -80°C. It is recommended that the protein be aliquoted for optimal storage. Avoid repeated freeze-thaw cycles. |

 Tel: 1-631-559-9269 1-516-512-3133

 Email: info@creative-biomart.com  Fax: 1-631-938-8127

 45-1 Ramsey Road, Shirley, NY 11967, USA

Reconstitution Dissolve the lyophilized protein in distilled water.

GENE INFORMATION

Gene Name IL22RA1 interleukin 22 receptor, alpha 1 [Homo sapiens]

Official Symbol IL22RA1

Synonyms IL22RA1; interleukin 22 receptor, alpha 1; IL22R, interleukin 22 receptor; interleukin-22 receptor subunit alpha-1; CRF2 9; IL-22RA1; zcytoR11; IL-22R-alpha-1; IL-22 receptor subunit alpha-1; cytokine receptor class-II member 9; cytokine receptor family 2 member 9; IL22R; CRF2-9; IL22R1;

Gene ID 58985

mRNA Refseq NM_021258

Protein Refseq NP_067081

MIM 605457

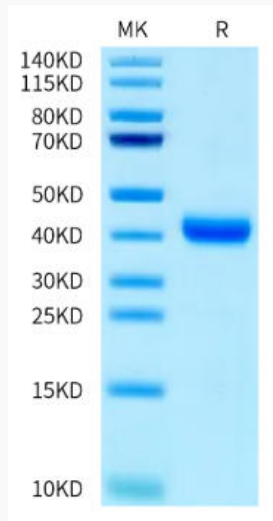
UniProt ID Q8N6P7

 Tel: 1-631-559-9269 1-516-512-3133

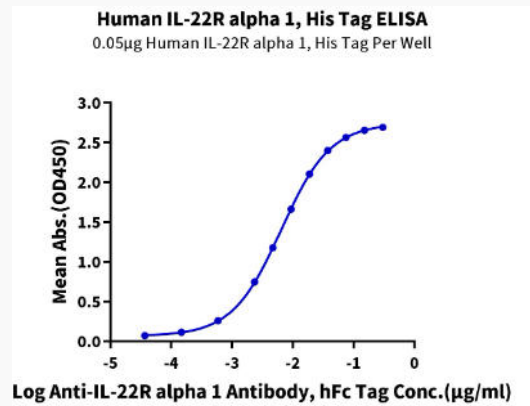
 Email: info@creative-biomart.com  Fax: 1-631-938-8127

 45-1 Ramsey Road, Shirley, NY 11967, USA

Bis-Tris PAGE



ELISA Data



 Tel: 1-631-559-9269 1-516-512-3133

 Email: info@creative-biomart.com  Fax: 1-631-938-8127

 45-1 Ramsey Road, Shirley, NY 11967, USA