

## Active Recombinant Human IL22RA1 protein, hFc-tagged

Cat. No. IL22RA1-780H Lot. No. (See product label)

### SPECIFICATION

<b>Product Overview</b>	Recombinant Human IL22RA1 protein(Q8N6P7)(His16-Thr228) is expressed from Expi293 with hFc tag at the C-terminal.
<b>Species</b>	Human
<b>Source</b>	HEK293
<b>ProteinLength</b>	His16-Thr228
<b>Form</b>	Supplied as 0.22µm filtered solution in PBS (pH 7.4). Please dilute to the desired concentration according to the concentration of the solution shown on the product label.
<b>Bio-activity</b>	Immobilized Human IL-22, His Tag at 2µg/ml (100µl/Well) on the plate. Dose response curve for Human IL-22R alpha 1, hFc Tag with the EC50 of 10.2ng/ml determined by ELISA.
<b>Molecular Mass</b>	The protein has a predicted MW of 51 kDa. Due to glycosylation, the protein migrates to 60-68 kDa based on Tris-Bis PAGE result.
<b>Endotoxin</b>	Less than 1.0 EU per µg by the LAL method.
<b>Purity</b>	> 95% as determined by Tris-Bis PAGE > 95% as determined by HPLC

 Tel: 1-631-559-9269 1-516-512-3133

 Email: [info@creative-biomart.com](mailto:info@creative-biomart.com)  Fax: 1-631-938-8127

 45-1 Ramsey Road, Shirley, NY 11967, USA

**Storage** Valid for 12 months from date of receipt when stored at -80°C.  
Recommend to aliquot the protein into smaller quantities for optimal storage. Please do not repeated freeze-thaw cycles.

**Reconstitution** It is recommended that sterile water be added to the vial to prepare a stock solution of 0.2 ug/ul. Centrifuge the vial at 4°C before opening to recover the entire contents.

## GENE INFORMATION

**Gene Name** [IL22RA1 interleukin 22 receptor, alpha 1 \[ Homo sapiens \]](#)

**Official Symbol** [IL22RA1](#)

**Synonyms** IL22RA1; interleukin 22 receptor, alpha 1; IL22R, interleukin 22 receptor; interleukin-22 receptor subunit alpha-1; CRF2 9; IL-22RA1; zcytoR11; IL-22R-alpha-1; IL-22 receptor subunit alpha-1; cytokine receptor class-II member 9; cytokine receptor family 2 member 9; IL22R; CRF2-9; IL22R1

**Gene ID** [58985](#)

**mRNA Refseq** [NM\\_021258](#)

**Protein Refseq** [NP\\_067081](#)

**MIM** [605457](#)

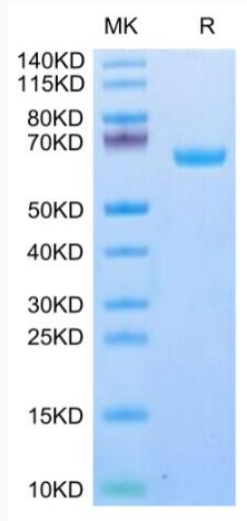
**UniProt ID** [Q8N6P7](#)

 Tel: 1-631-559-9269 1-516-512-3133

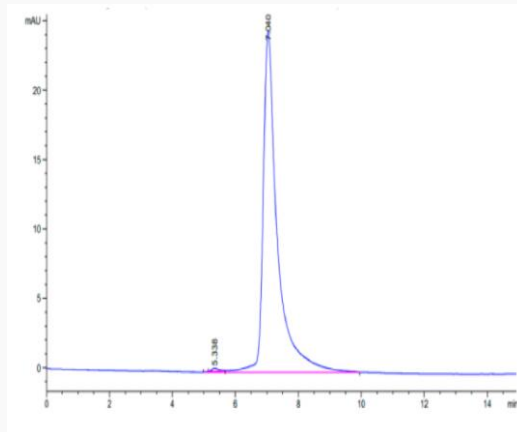
 Email: [info@creative-biomart.com](mailto:info@creative-biomart.com)  Fax: 1-631-938-8127

 45-1 Ramsey Road, Shirley, NY 11967, USA

**Tris-Bis PAGE**



**SEC-HPLC**

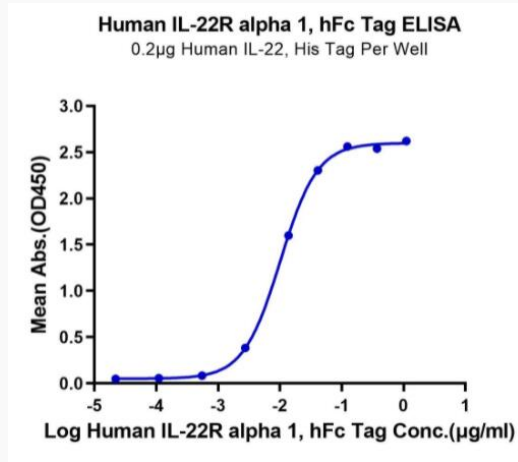



 Tel: 1-631-559-9269 1-516-512-3133

 Email: [info@creative-biomart.com](mailto:info@creative-biomart.com)  Fax: 1-631-938-8127

 45-1 Ramsey Road, Shirley, NY 11967, USA

ELISA Data



 Tel: 1-631-559-9269 1-516-512-3133

 Email: [info@creative-biomart.com](mailto:info@creative-biomart.com)  Fax: 1-631-938-8127

 45-1 Ramsey Road, Shirley, NY 11967, USA