

Recombinant Human IL22RA2 Protein, His-tagged

Cat. No. IL22RA2-2302H **Lot. No.** (See product label)

SPECIFICATION

Product Overview	Recombinant Human IL22RA2 Protein (Thr22-Pro263) with a N-His tag was expressed in E. coli.
Species	Human
Source	E.coli
ProteinLength	Thr22-Pro263
Description	This gene encodes a member of the class II cytokine receptor family. The encoded soluble protein specifically binds to and inhibits interleukin 22 activity by blocking the interaction of interleukin 22 with its cell surface receptor. The encoded protein may be important in the regulation of inflammatory response, and has been implicated in the regulation of tumorigenesis in the colon. Alternative splicing results in multiple transcript variants encoding distinct isoforms.
Form	Freeze-dried powder
Molecular Mass	Predicted Molecular Mass: 31.9 kDa Accurate Molecular Mass: 32 kDa
Endotoxin	<1.0 EU per 1g (determined by the LAL method).
Purity	> 90%

 Tel: 1-631-559-9269 1-516-512-3133

 Email: info@creative-biomart.com  Fax: 1-631-938-8127

 45-1 Ramsey Road, Shirley, NY 11967, USA

Applications	Positive Control; Immunogen; SDS-PAGE; WB.
Stability	The thermal stability is described by the loss rate. The loss rate was determined by accelerated thermal degradation test, that is, incubate the protein at 37 centigrade for 48h, and no obvious degradation and precipitation were observed. The loss rate is less than 5% within the expiration date under appropriate storage condition.
Storage	Avoid repeated freeze/thaw cycles. Store at 2-8 centigrade for one month. Aliquot and store at -80 centigrade for 12 months.
Storage Buffer	20mM Tris, 150mM NaCl, pH8.0, containing 1mM EDTA, 1mM DTT, 0.01% SKL, 5% Trehalose and Proclin300.
Reconstitution	Reconstitute in 20mM Tris, 150mM NaCl (pH8.0) to a concentration of 0.1-1.0 mg/mL. Do not vortex.

GENE INFORMATION

Gene Name	IL22RA2 interleukin 22 receptor, alpha 2 [Homo sapiens (human)]
Official Symbol	IL22RA2
Synonyms	IL22RA2; interleukin 22 receptor, alpha 2; interleukin-22 receptor subunit alpha-2; CRF2 S1; IL 22BP; zcytoR16; IL-22R-alpha-2; class II cytokine receptor; IL-22 receptor subunit alpha-2; interleukin 22-binding protein; interleukin-22-binding protein; cytokine receptor class-II member 10; cytokine receptor family 2 member 10; cytokine receptor family type 2, soluble 1; CRF2X; CRF2-10; CRF2-S1; IL-22BP; IL-22RA2; MGC150509; MGC150510;
Gene ID	116379

 Tel: 1-631-559-9269 1-516-512-3133

 Email: info@creative-biomart.com  Fax: 1-631-938-8127

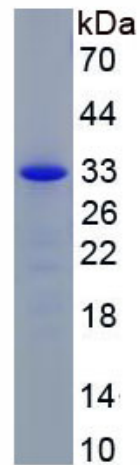
 45-1 Ramsey Road, Shirley, NY 11967, USA

mRNA Refseq [NM_052962](#)

Protein Refseq [NP_443194](#)

MIM [606648](#)

UniProt ID [Q969J5](#)



 Tel: 1-631-559-9269 1-516-512-3133

 Email: info@creative-biomart.com  Fax: 1-631-938-8127

 45-1 Ramsey Road, Shirley, NY 11967, USA