

Active Recombinant Human IL22RA2 protein, His-tagged

Cat. No. IL22RA2-2699H Lot. No. (See product label)

SPECIFICATION

Product Overview	Recombinant Human IL-22RA2/IL22BP Protein is produced by HEK293 cells expression system. The target protein is expressed with sequence (Thr22-Pro231) of human IL-22BP/IL-22RA2 (Accession #NP_851826.1) fused with a 6xHis tag at the C-terminus.
Species	Human
Source	HEK293
ProteinLength	Thr22-Pro231
Form	Lyophilized from a 0.22 µm filtered solution of PBS, pH 7.4.
Bio-activity	Measured by its binding ability in a functional ELISA. Immobilized recombinant Human IL22 at 2 µg/mL (100 µL/well) can bind recombinant Human IL22BP, the EC50 of Human IL22BP is 10.78 ng/mL.
Molecular Mass	40-50 kDa
Endotoxin	< 0.1 EU/µg of the protein by LAL method.
Purity	> 90% by SDS-PAGE.
Storage	Store the lyophilized protein at -20°C to -80 °C for long term. After reconstitution, the protein solution is stable at -20 °C for 3 months, at 2-8 °C for

 Tel: 1-631-559-9269 1-516-512-3133

 Email: info@creative-biomart.com  Fax: 1-631-938-8127

 45-1 Ramsey Road, Shirley, NY 11967, USA

up to 1 week.

Reconstitution Reconstitute to a concentration of 0.1-0.5 mg/mL in sterile distilled water.

GENE INFORMATION

Gene Name IL22RA2 interleukin 22 receptor, alpha 2 [Homo sapiens]

Official Symbol IL22RA2

Synonyms

IL22RA2; interleukin 22 receptor, alpha 2; interleukin-22 receptor subunit alpha-2; CRF2 S1; IL 22BP; zcytoR16; IL-22R-alpha-2; class II cytokine receptor; IL-22 receptor subunit alpha-2; interleukin 22-binding protein; interleukin-22-binding protein; cytokine receptor class-II member 10; cytokine receptor family 2 member 10; cytokine receptor family type 2, soluble 1; CRF2X; CRF2-10; CRF2-S1; IL-22BP; IL-22RA2; MGC150509; MGC150510;

Gene ID 116379

mRNA Refseq NM_052962

Protein Refseq NP_443194

MIM 606648

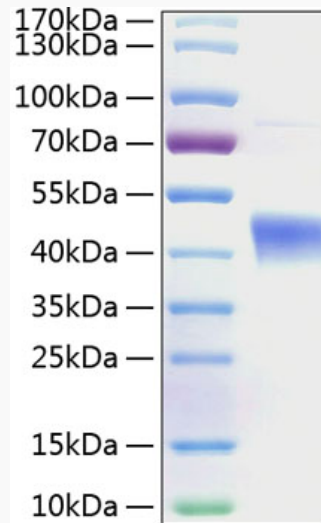
UniProt ID Q969J5

 Tel: 1-631-559-9269 1-516-512-3133

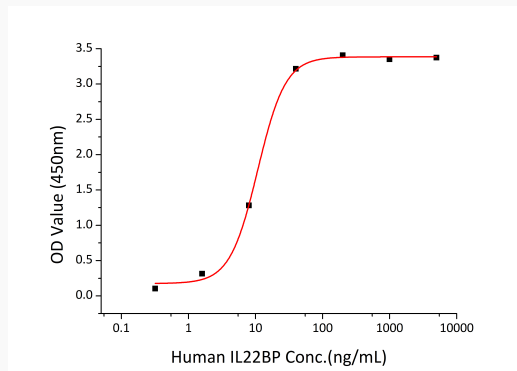
 Email: info@creative-biomart.com  Fax: 1-631-938-8127

 45-1 Ramsey Road, Shirley, NY 11967, USA

SDS-PAGE



Bio-activity



 Tel: 1-631-559-9269 1-516-512-3133

 Email: info@creative-biomart.com  Fax: 1-631-938-8127

 45-1 Ramsey Road, Shirley, NY 11967, USA