

Recombinant Human IL23 Protein, His tagged

Cat. No. IL23A&IL12B-01HFL **Lot. No.** (See product label)

SPECIFICATION

Product Overview	Recombinant human IL23 p40 and p19, fused to His-tag at C-terminus, was expressed in insect cell and purified by using conventional chromatography techniques.
Species	Human
Source	Insect Cells
ProteinLength	p40: 23-328 aa p19: 20-189 aa
Description	IL23 p40 and p19, also known as interleukin-12 subunit beta/interleukin-23 subunit alpha, is a heterodimeric cytokine composed of two disulfide-linked subunit, a p19 subunit that is unique to IL23, and a p40 subunit that is shared with IL12. The p19 subunit has homology to the p35 subunit of IL12, as well as to other single chain cytokines sub as IL6 and IL11. It is produced by macrophages and B lymphocytes and has multiple effects on T cells and NK cells, including stimulation of cytotoxic activity, proliferation, and promotion of Th1 development as well as IFN-gamma and TNF production. Recombinant human IL23 p40 and p19, fused to His-tag at C-terminus, was expressed in insect cell and purified by using conventional chromatography techniques.
Form	Liquid
AASequence	IL12B (p40): IWELKKDVYVVELDWYPDAPGEMVVLTCDTPEEDGITWTLDQSSEVL GSGKTLTIQVKEFGDAGQYTCHKGGEVLSHSLLLLHKKEDGIWSTDILKDQKEPKNK

 Tel: 1-631-559-9269 1-516-512-3133

 Email: info@creative-biomart.com  Fax: 1-631-938-8127

 45-1 Ramsey Road, Shirley, NY 11967, USA

TFLRCEAKNYSGRFTCWWLTTISTDLTFSVKSSRGSSDPQGVTCGAATLSAERVRG
 DNKEYEYSVEQCEDSACPAAEESLPIEVMVDAVHKLKYENYTSSFFIRDIKPDPPKN
 LQLKPLKNSRQVEVSWEYPDTWSTPHSYFSLTFCVQVQGKSKREKKDRVFTDKTS
 ATVICRKNASISVRAQDRYYSSSWSEWASVPCS IL23A (p19): RAVPGGSSPAWTQ
 CQQLSQKLCTLAWSAHLVGHMDLREEGDEETTNDVPHIQCGDGCDPQGLRDNS
 QFCLQRIHQGLIFYEKLLGSDIFTGEPSELLPDSVPGQLHASLLGLSPLLQPEGHHWET
 QQIPSLSPSQPWQRLLLLRFKILRSLQAFVAVAARVFAHGAATLSP

Molecular Mass p40: 34.6 kDa p19: 19.5 kDa

Endotoxin < 1 EU/μg by LAL

Purity > 95% by SDS-PAGE

Application SDS-PAGE

Note For research use only. This product is not intended or approved for human, diagnostics or veterinary use.

Storage Can be stored at +2 to +8 centigrade for 1 week. For long term storage, aliquot and store at -20 to -80 centigrade. Avoid repeated freezing and thawing cycles.

Storage Buffer Phosphate-Buffered Saline (pH 7.4) containing 10% glycerol

Concentration 1 mg/mL (determined by absorbance at 280nm)

GENE INFORMATION

Gene Name IL23A interleukin 23 subunit alpha [Homo sapiens (human)]

Official Symbol IL23A interleukin 23 subunit alpha [Homo sapiens (human)]

 Tel: 1-631-559-9269 1-516-512-3133

 Email: info@creative-biomart.com  Fax: 1-631-938-8127

 45-1 Ramsey Road, Shirley, NY 11967, USA

Synonyms	IL23A; interleukin 23 subunit alpha; P19; SGRF; IL-23; IL-23A; IL23P19
Gene ID	51561
mRNA Refseq	NM_016584
Protein Refseq	NP_057668
MIM	605580
UniProt ID	Q9NPF7
Gene Name 2	IL12B interleukin 12B [Homo sapiens (human)]
Official Symbol 2	IL12B
Synonyms 2	IL12B; interleukin 12B (natural killer cell stimulatory factor 2, cytotoxic lymphocyte maturation factor 2, p40); NKSF2; interleukin-12 subunit beta; CLMF; CLMF2; cytotoxic lymphocyte maturation factor 2; p40; IL 12B; IL12; subunit p40; interleukin 12; interleukin 12 beta chain; natural killer cell stimulatory factor; 40 kD subunit; natural killer cell stimulatory factor 2; NKSF; CLMF p40; IL-12 subunit p40; IL12, subunit p40; interleukin 12, p40; interleukin-12 beta chain; NK cell stimulatory factor chain 2; cytotoxic lymphocyte maturation factor 40 kDa subunit; natural killer cell stimulatory factor, 40 kD subunit; IL-12B;
Gene ID 2	3593
mRNA Refseq 2	NM_002187
Protein Refseq 2	NP_002178

 Tel: 1-631-559-9269 1-516-512-3133

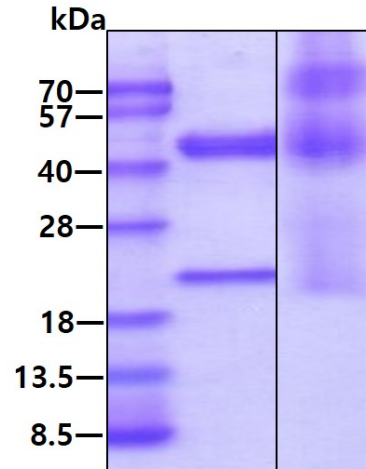
 Email: info@creative-biomart.com  Fax: 1-631-938-8127

 45-1 Ramsey Road, Shirley, NY 11967, USA

MIM 2 161561

UniProt ID 2 P29460

SDS-PAGE



3 μ g by SDS-PAGE visualized by coomassie blue stain. Lane 1: reducing condition
Lane 2: non-reducing condition

Tel: 1-631-559-9269 1-516-512-3133

Email: info@creative-biomart.com Fax: 1-631-938-8127

45-1 Ramsey Road, Shirley, NY 11967, USA