

Active Recombinant Full Length Human IL23A Protein, C-Flag-tagged

Cat. No. IL23A-109HFL Lot. No. (See product label)

SPECIFICATION

Product Overview	Recombinant Full Length Human IL23A Protein, fused to Flag-tag at C-terminus, was expressed in Mammalian cells.
Species	Human
Source	Mammalian Cells
Description	This gene encodes a subunit of the heterodimeric cytokine interleukin 23 (IL23). IL23 is composed of this protein and the p40 subunit of interleukin 12 (IL12B). The receptor of IL23 is formed by the beta 1 subunit of IL12 (IL12RB1) and an IL23 specific subunit, IL23R. Both IL23 and IL12 can activate the transcription activator STAT4, and stimulate the production of interferon-gamma (IFNG). In contrast to IL12, which acts mainly on naive CD4(+) T cells, IL23 preferentially acts on memory CD4(+) T cells.
Form	25 mM Tris HCl, pH 7.3, 100 mM glycine, 10% glycerol.
Bio-activity	Protease substrate Cell treatment MS digestion
Molecular Mass	18.6 kDa
AA Sequence	MLGSRAVMLLLLLPWTAQGRAVPGGSSPAWTQCQQLSQKLCTLAWSAHPLVGHM

 Tel: 1-631-559-9269 1-516-512-3133

 Email: info@creative-biomart.com  Fax: 1-631-938-8127

 45-1 Ramsey Road, Shirley, NY 11967, USA

DLREEGDEETTNDVPH IQCGDGCDPQGLRDNSQFCLQRIHQGLIFYEKLLGSDIFTG
 EPSLLPDSPVQGQLHASLLGLSQLLQPEGH
 HWETQQMPSPSPSQPWQRLLLRFKILRNLQAFVAVAARVFAHGAATLSPTRTRPLE
 QKLISEEDLAANDILDYKDDDDKV

Purity	> 80% as determined by SDS-PAGE and Coomassie blue staining.
Stability	Stable for 12 months from the date of receipt of the product under proper storage and handling conditions. Avoid repeated freeze-thaw cycles.
Storage	Store at -80 centigrade.
Concentration	>50 ug/mL as determined by microplate BCA method.
Preparation	Recombinant protein was captured through anti-DDK affinity column followed by conventional chromatography steps.
Protein Families	Druggable Genome, Secreted Protein
Protein Pathways	Cytokine-cytokine receptor interaction, Jak-STAT signaling pathway
Full Length	Full L.

GENE INFORMATION

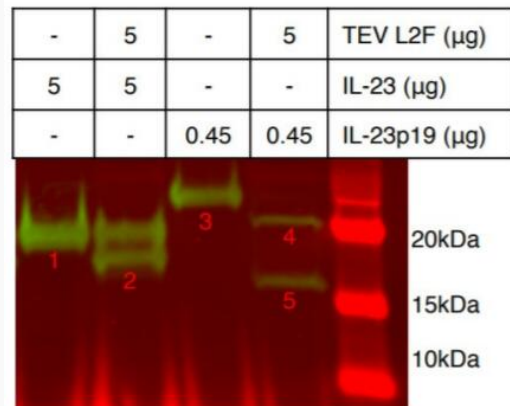
Gene Name	IL23A interleukin 23 subunit alpha [Homo sapiens (human)]
Official Symbol	IL23A
Synonyms	P19; SGRF; IL-23; IL-23A; IL23P19

 Tel: 1-631-559-9269 1-516-512-3133

 Email: info@creative-biomart.com  Fax: 1-631-938-8127

 45-1 Ramsey Road, Shirley, NY 11967, USA

Gene ID	51561
mRNA Refseq	NM_016584.3
Protein Refseq	NP_057668.1
MIM	605580
UniProt ID	Q9NPF7

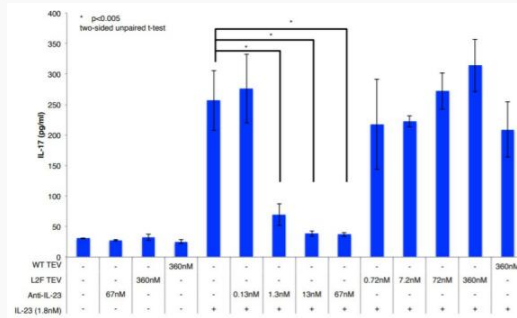


Identification of IL-23 cleavage sites by Western blot. IL-23 heterodimer (IL-23) and IL-23 monomer (IL-23p19) were incubated with or without TEV L2F. Reaction mixtures were subjected to Western blot with an anti-IL-23p19 monoclonal antibody.

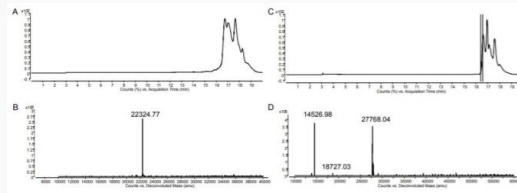
 Tel: 1-631-559-9269 1-516-512-3133

 Email: info@creative-biomart.com  Fax: 1-631-938-8127

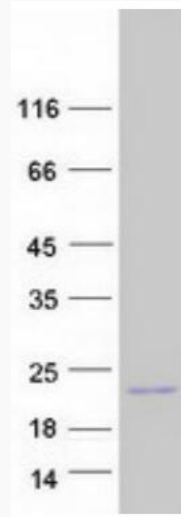
 45-1 Ramsey Road, Shirley, NY 11967, USA




Cultured mouse mononuclear splenocytes secrete IL-17 in response to human IL-23 in the media. Addition of antibodies that neutralize IL-23 to the cell culture media prevents this response.




Identification of two cleavage sites of TEV L2F protease within IL-23 monomer by mass spectrometry.



Coomassie blue staining of purified IL23A protein.

 Tel: 1-631-559-9269 1-516-512-3133

 Email: info@creative-biomart.com  Fax: 1-631-938-8127

 45-1 Ramsey Road, Shirley, NY 11967, USA